



COSMONET

April 2022 (vol. 297)

The following articles are taken mainly from "Koho Ashiya" – the bulletin of Ashiya City (April issue). It is, of course, a Japanese edition, and translated into English by a voluntary group from the Ashiya Cosmopolitan Association. Please understand that some phone numbers listed under the various events are staffed by people who may not speak English.

**Starting in April,
10 public facilities in the
city will be powered by
100% renewable energy.**

This initiative can reduce
greenhouse gas emissions by
approx. 700 tons per year.

Fire Department Main Office

Ashiya Citizens' Center

Kamimiyagawa Cultural Center

Uchide Educational and Cultural Center

Main Municipal Library

Yamate-kansen Boulevard Pumping Building

Collection Service Management Office

Midori Community Life Support Center

Ashiya Crematory "Seien"

Takahama Fire Substation

Aiming for A Zero-Carbon City by 2050 (Excerpts)

Ashiya City is advancing new initiatives to realize a zero-carbon city by 2050.

■ What is a Zero-Carbon City?

Reducing greenhouse gas emission to net zero within the city.

Starting in April, 10 public facilities in the city will be powered by 100% renewable energy. This initiative can reduce approx. 700 tons of greenhouse gas emissions per year, down roughly 67%. We will continue to consider energy saving plans such as ZEB retrofits in public facilities and promote the introduction of renewable power.

<100% Renewable Power>

Electricity that emits virtually no greenhouse gases from the use of electricity

<Renewable Energy>

Energy that is generated from natural processes. It includes sources such as sunlight, wind power, geothermal heat, water power and biomass

<Greenhouse Gas>

A gas that has the property of trapping the sun's heat in the Earth's atmosphere, such as carbon dioxide (CO₂) and methane (CH₄)

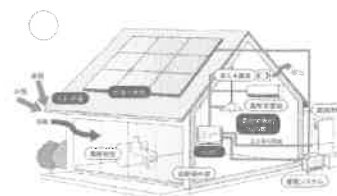
<ZEB> (Net Zero Energy Building)

ZEB is a building with net zero energy consumption, where the total amount of energy used by the building on an annual basis is equal to the amount of energy created on the site. The goal is to achieve net zero consumption by creating energy while reducing energy demands by saving energy while maintaining a comfortable indoor environment. Energy-saving technology and energy-creating technology are used to achieve this goal.

<ZEH> (Net Zero Energy House)

A Zero Energy House (ZEH) is a highly-insulated and highly efficient house that consumes less energy than it produces on an annual basis by creating renewable energy, usually through photovoltaic cells on the roof. If you build a new house or make home renovations that meet the requirements of ZEH, you are eligible to receive a government subsidy. Starting in fiscal 2021, an additional municipal subsidy of 200,000 yen per home is also available.

※For further information, see the city's website or contact us by phone.



■ Zero Carbon Action 30 (Ministry of the Environment)

(1) Energy saving and transition to renewable energy:

- Switching to renewable power - Cool Biz/Warm Biz
- Power saving/Water saving - Replace with energy-saving home appliances.
- Visualization of energy consumption

(2) Living in an energy-efficient home, such as housing equipped with solar panels:

- ZEH (Net Zero Energy House)

- Installing energy-saving devices or renewable energy equipment at the time of housing renovation, such as insulation of windows and walls or an energy-saving water heater

- Work style device - Make effective use of wood in your life

(3) Choose a transportation method with less CO2 emissions:

- Smart Move (Eco-friendly transport) - Zero Carbon Drive



(4) Reduce food losses and waste:

- Don't waste food - Make home-made compost
- Reduce food waste and preserve uneaten food
- Keeping a healthy dietary life using seasonal foodstuffs and locally-produced vegetables

(5) Actively participate in environmental conservation activities:

- Afforestation, activities such as picking up litter

(6) Choose eco-friendly products and services:

- Choose decarbonized products and services - ESG investment by individuals

(7) 3R (Reduce, Reuse, Recycle)

- Reduce single-use plastics - Bring your own bags and carry your own water bottles
- Separate the disposal of garbage - Repair broken items

(8) Choose sustainable fashion:

- Choose eco-friendly clothing.

■ **Inquiries:** Environmental Preservation Subsection,
 Environment Section (Phone: 0797-38-2051)

Information about COVID-19 Vaccination

Booster Shots (3rd dose)



Those aged 18 or older can receive booster shots at least six months after receiving the second dose. The Ministry of Health, Labor and Welfare has asked municipalities to get ready to roll-out third booster shots to children aged between 12 and 17. You will be notified of details once they have been decided.

■ **The date to send out the vaccination voucher**

The vaccination voucher will be sent out to those eligible approx. ten days before six months have passed since their second shot. If you have received two doses of the COVID-19 vaccine overseas, or if you don't receive your booster voucher even after your vaccination period has passed, please apply by using the 2D code on the right or contact Ashiya City COVID-19 Vaccine Call Center.



■ **Vaccination schedule**

- Inoculation at Health and Welfare Center will be finished on the dates indicated below.

- If you wish to get vaccinated, please make a reservation as early as possible at individual medical facilities.
- This information may change due to the government policy, etc.
- For a list of individual medical facilities, please check the city's website.

Vaccination Site	Vaccination Date	Hours	Type of Vaccine
Health and Welfare Center (14-9 Kurekawa-cho)	Sat., April 2, Sun., April 3, Sat., April 9, Sun., April 10	1:30-6:00 p.m.	Takeda/Moderna
	Sat., April 16, Sat., April 23, Sun., April 24, Sat., April 30, Sun., May 1	1:30-4:00 p.m.	
Individual Medical Facilities	Until Sun., April 3	Depending on each medical facility	Takeda/Moderna
	Mon., April 4-Sun., April 17		Pfizer
	Mon., April 18-Sun., May 1		Takeda/Moderna
	Mon., May 2-mid-May		Pfizer

■ The efficacy and side effects of booster shots

Type of 3 rd Dose	Antibody Level	Fever	Fatigue	Headache
Pfizer	54.1x	21.4%	69.1%	55%
Takeda/Moderna	67.9x	49.2%	78%	69.6%

*For above symptoms, it is reported that they subdued within two or three days.

*This data is the result of a study of those who have received two doses of Pfizer vaccine.

■ For children aged 5-11 (1st & 2nd dose)

Vaccination for children aged 5-11 has started.

- COVID-19 vaccination is not mandatory. Please decide for yourself whether your child will get vaccinated, understanding both the effectiveness in preventing infection and possible side effects.
- Each month children who are turning 5 will receive their voucher around the 20th of the month before their birthday month.
- Anyone aged 12 and older is still eligible to receive the first shot.



■ How to Make a Reservation

◆ Online (Web) Reservation: Make a reservation online from City Website.

◆ Ashiya City COVID-19 Vaccine Call Center (Phone: 0797-31-0655)

Hours: Mon.-Fri. 9:00 a.m.-5:30 p.m./Sat. & Sun. 10:00 a.m.- 6:30 p.m.

- Please make sure to dial the correct number.
- When you call, please make sure to have your vaccination coupon ready.
- If you need help because of difficulty hearing or speaking Japanese, fax us for consultation. (Fax: 0797-31-1018)



Administrative Policy for 2022

–Aiming to create a city with hope for the future by seeing the changes in the ages of many challenges as an opportunity – (Partly abridged)



Inquiries: Policy Promotion Section (Phone: 0797-38-2127)

Currently, several crises are occurring simultaneously. We are now facing uncertainty about the future such as: declining birthrate and the increase of an aging population, global warming, frequent and severe natural disasters and infectious diseases. All these stir anxieties about the future. In light of changing social conditions due to accelerating digitalization and spreading a positive attitude toward SDGs, we must face the challenges and lay the foundation without delay. In response to the new coronavirus infection, we will overcome this national crisis and open the way for the future of post-Corona. This can be achieved by advancing the economic activities that are in harmony with new lifestyles, based on the government's measures against the virus.

The newly formulated 5th Ashiya City Comprehensive Plan and the 2nd Ashiya City Creation Comprehensive Strategy will be promoted with the framework of “Creating a town where the wish of raising children can come true” and “Creating a town where people can connect with one another and are actively involved in the community”. We will also continue to work on the sustainable administrative management and financial plan to respond the changing social situation.

Specifically, we will improve citizen services and welfare by incorporating DX (Digital Transformation). We will firmly engage in the redevelopment project in the south side of JR Ashiya Station. We inherited a beautiful city which was built by our predecessors and for the future we will develop Ashiya City with an open mind, in cooperation with the citizens who will play the leading role.

Ito Mai, Mayor

Main Projects for the 2022 Fiscal Year (Excerpts)

<Child-rearing, Education >

- ✧ Childcare support for the children who need medical care
 - Nurses are assigned or dispatched to daycare centers where children in need of medical care are enrolled.
- ✧ Reconstruction of Seido Junior High School
- ✧ Renovation of Museum of Art and History
 - The museum will be temporarily closed from July 2022 to March 2023.
- ✧ Renovation of Tanizaki Junichiro Memorial Museum of Literature
 - The museum will be closed from July 2022 to March 2023.



- ✧ Establishment of a system to support the entrance examination fee for universities and other institutions
- ✧ Consolidation of *My number card* and a library card
 - *My number card* can be used as a library card, also available at libraries in 7 cities and 1 town in Hanshin districts.
- ✧ Inclusive education and childcare services at licensed daycare centers



<Welfare, Health>

- ✧ Multilayered Support System
 - To build connection between people and enable people to lead their own lives, we will assign welfare specialists who will be responsible for multi-institutional collaboration, participation and out-reach function.
- ✧ Support for home finances
 - Counselors for household finances will be assigned to provide assistance in managing household finances, resolving default of payment and debt consolidation, along with livelihood support.
- ✧ Cervical cancer prevention catch-up vaccination
 - Women born between 1997 and 2005 who have not been vaccinated can be vaccinated free of charge at medical institutions in the city between April 2022 and March 2025.
- ✧ Vaccination against the New Corona Virus
- ✧ Support for young carers

<Citizen's Lives>

- ✧ Research toward decarbonization
- ✧ Enlightening program accompanying the introduction of designated garbage bags
 - This is to reduce carbon dioxide emission and incinerator ash. The Household Waste Handbook will be fully revised and distributed to all households.
- ✧ Subsidy for the installation of energy-saving equipment for general housing

<Safety and Security>

- ✧ Removal of roadside utility poles along the Ashiyagawa River
- ✧ Colorization of the edges of 4 school-commuting roads,
- ✧ city road 192, 321, 504 and 243



<Urban Infrastructure>

- ✧ Redevelopment of the south side of JR Ashiya Station
- ✧ Outsourcing of the pruning of roadside trees and cleaning of the streets
- ✧ Repair of 4 bridges and regular inspection
- ✧ Improvement of Refuse Disposal Center
- ✧ Improvement of pipe line



Administrative Management>

- ✧ Introduction of AI Chat Pot
 - By using AI, inquiries from citizens are automatically responded to on the website.
- ✧ Start of online access by my number card to apply for childcare and nursing care

Ashiya in Spring Photo Contest



- ✧ Application Term: April 1 – May 31
- ✧ Eligibility for entry: Spring photos of the city taken this year that have not been published.
- ✧ How to apply: Submit data within 3GB (JPEG) by the application form which is available on the Ashiya Tourism Association's website.
- ✧ Awarding: Certificate and an additional prize

Inquiries: Ashiya Tourism Association, Executive office

c/o Regional Economy Promotion Section (Phone: 0797-38-2033)

Vendors for Environmental Flea Market Wanted!

- ✧ Date and Time: Sun., May 29 9:30 a.m. – 3:00 p.m.
Cancelled in case of rain. Cancellation will be announced on the Chamber of Commerce and Industry website around 8:00 a.m.
- ✧ Place: Pedestrian Deck on the north of JR Ashiya Station
- ✧ Cost: 1,000 yen for one booth Capacity: 20 booths
- ✧ Application: Send a reply-paid post card with your name, address, phone and fax number and items to sell by May 6. Please write your name and address on the reply card.
- ✧ Drawing will be held from 4:00 p.m. on May 18 (Wed.).

Tardiness or absence will be regarded as a disqualified.

- ✧ Mailing address: 〒659-0065 Ashiya-shi Shoko-kai (Ashiya Chamber of Commerce and Industry) Kimmitsu-cho 4-28 (Phone: 0797-23-2071)

Inquiries: Environmental Disposal Center (Phone: 0797-32-5391)



♪ Shio-Ashiya Kirameki Concert ♪

- ✧ Date and Time: Sat., April 23 2:00 p.m.
- ✧ Place: Shio-Ashiya Exchange Center, 2F All-purpose Room
- ✧ Program: *Kojo no Tsuki* (The Moon over the Ruined Castle), Londonderry Air, Ave Maria by Caccini, Love Theme from Nuovo Cinema Paradiso, etc.
- ✧ Performers: Nakamura Yachiyo, flute, Teramoto Ikuko, soprano, Takase Fukiko, piano
- ✧ Capacity: 60 people
- ✧ Fee: Advanced – 800 yen On the day– 1,000 yen
- ✧ Application and Inquiries: Shio-Ashiya Exchange Center (Phone: 0797-25-0511)



Pension Handbook/Basic Pension Number Notification

From April 1, 2022, a Basic Pension Number Notification (基礎年金番号通知書 *kiso-nenkin-bango tsuchisho*) will be issued instead of a Pension Handbook (年金手帳 *nenkin techo*) to those described below. Pension Handbooks can continue to be used as a document to verify your Basic Pension Number (基礎年金番号 *kiso-nenkin-bango*).

➤ Those who join the pension system for the first time on or after April 1, 2022, such as those who have reached the age of 20 and those who became insured by the Employees' Pension Insurance (厚生年金 *kosei nenkin*) before 20 years of age, will be issued the Basic Pension Number Notifications.

※ Basic Pension Number Notifications will not be issued to those who have already been issued a Pension Handbook.



◇ **Inquiries:** Citizens' Section

Phone: 0797-38-2036

Nishinomiya Pension Office

Phone: 0798-33-2944

National Pension Special Payment System for Students



Students with difficulty making contribution payments for National Pension (国民年金保険料 *kokumin nenkin hoken-ryo*) due to low income, etc., may be eligible for the Special Payment System for Students (学生納付特例制度 *gakusei nofu tokurei seido*), under which contribution payments can be made after graduation. However, some schools are not included in this payment system. Please be sure to apply for this payment system as failure to do so may result in a reduction in future pension benefits or an inability to receive disability basic pension (障害基礎年金 *shogai kiso-nenkin*).

◇ **Eligibility:** Students with a previous year's income of 1,280,000 yen or less. For those with dependents, the income threshold may be higher. An application must be submitted for this special payment system.

◇ **Application:** Bring your student card and personal identification document

■ Retroactive Payment of Contributions:

Periods granted under the Special Payment System for Students will count towards the qualifying periods for Old-age Basic Pension (老齢基礎年金 *rorei kiso-nenkin*), but will not be reflected in the amount of the pension benefit. If you make contribution payments (retroactive payments) within 10 years from the month you were granted the Special Payment System for Students, the payments will be reflected in the pension benefit amount.

However, please note that an index will be imposed on your past contribution amount if you were to make retroactive payments three or more fiscal years after the following fiscal year you were granted the Special Payment System for Students. Your past contribution amount will be indexed by a certain rate according to the age of the due contribution.

◇ **Inquiries:** Citizens' Section (National Pension)

Phone: 0797-38-2036

Medical Care System for the Elderly Premium Rates

Insurance premiums for the Medical Care System for the Elderly (後期高齢者医療制度 *koki-koreisha iryo-seido*) for the fiscal years 2022 and 2023 have been determined. They will be notified in the Insurance Premium Determination Notices (保険料額決定通知書 *hokenryogaku kettei tsuchisho*) scheduled to be sent out in mid-July.



◇ FY2022–2023 Insurance Premiums (660,000 yen maximum):

Per capita amount (50,147 yen) + Per income amount (assessable amount x 10.28%)

※ The taxable income is the amount remaining after deducting the basic exemption of 430,000 yen from the gross income etc.

◇ Inquiries: Medical Care for the Elderly Subsection

Phone: 0797-38-2037

Hyogo Prefecture Association of Medical Care Services for Older Senior Citizens Office
(兵庫県後期高齢者医療広域連合事務局 *Hyogo-ken Koki-koreisha-iryo Koiki Rengo Jimukyoku*)

Phone: 078-326-2021



Long-term Care Insurance Premium Collection

Long-term care insurance premiums (介護保険料 *kaigo hoken-ryo*) for April and June will be withheld from pension benefits. The amount withheld will be the same as that withheld in February. Adjustments will be made with pension benefits withheld in and after August.

◇ Inquiries: Management Subsection

Phone: 0797-38-2046

Senior Citizens' Long-term Care Section

Routine Pneumococcal Vaccination for Senior Citizens

Coupons for routine pneumococcal vaccinations (肺炎球菌ワクチン *haien kyukin wakuchin*) are scheduled to be mailed at the beginning of May to those eligible. The out-of-pocket expense for the 23-valent pneumococcal vaccination is 4,000 yen. Those who have already received the vaccination are not eligible.

◇ Vaccination Period: April 1, 2022–March 31, 2023

◇ Eligibility: Registered residents of Ashiya City who have not been previously inoculated with the 23-valent pneumococcal vaccination, and who are 65, 70, 75, 80, 85, 90, 95, and 100 years old.

◇ Reservation: Various medical institutions

◇ Inquiries: Health Center

Phone: 0797-31-1586



ASHIYA TRIANGLE, Ashiya Public Relations TV Program (CH11 / 15 min.)

Broadcast Time: ①9:00 a.m. ②12:00 noon ③4:00 p.m. ④8:00 p.m. ⑤10:00 p.m.



Water Leak and Water Supply Pipe Repairs

- Weekdays during the daytime ➤ **Waterworks Customer Service Center**
- Saturdays, Sundays, public holidays, and during the night ➤ **City Hall**

☎ 0797-38-2082

☎ 0797-31-2121



Fixed Asset Tax & City Planning Tax

Notification for Fixed Asset Tax and City Planning Tax (固定資産税・都市計画税納税通知書 *kotei-shisan-zei toshi-keikaku-zei nozei-tsuchisho*) for the fiscal year 2022 will be sent out on April 4, 2022.

■ Those with Renovated Homes:

The fixed asset tax may be reduced if renovation work took place to make one's home earthquake-resistant, barrier-free, or energy-saving. For requirements, etc., refer to the Ashiya City website or inquire with the Fixed Assets Tax Subsection.



◇ **Application:** Submit an application form along with proof supporting your application via mail or in-person to the Fixed Assets Tax Subsection.

◇ **Inquiries:** Fixed Assets Tax Subsection, Taxation Section Phone: 0797-38-2017

Subsidy for Disaster Preparedness

■ Installation of Furniture Anti-Tip Devices:

Those who have difficulty installing equipment to prevent furniture from falling over in the event of an earthquake, such as households with only senior citizens are eligible for a subsidy for the installation cost (up to 5,200 yen maximum).



■ Emergency Broadcast Radios:



Emergency broadcast radios are sold at the Ashiya City Hall Shop for 8,800 yen including tax. In the event of an emergency or disaster, the radio will automatically activate and start broadcasting at a maximum volume. Those registered in the Emergency & Disaster Special Needs Registry (緊急・災害時要援護者台帳 *kinkyu saigai-ji yoengosha daicho*), such as the elderly and disabled persons, may purchase the radio for 1,000 yen including tax.

◇ **Inquiries:** Disaster Prevention and Security Section

Phone: 0797-38-2093

Seeking Volunteer Fire Corps

◇ **Responsibilities:** Periodic training and drills, duties in times of disaster, public relations work, and instructing community disaster prevention and preparedness drills, etc.

◇ **Qualification:** 18 to 49-year-olds living or working in Ashiya City.

◇ **Compensation:** Pay according to city ordinance, allowances for disaster response and participation in various training, uniform rentals, occupational accident compensation, etc.



◇ **Inquiries:** General Affairs Section, Fire Department Headquarters Phone: 0797-38-2095

Subsidy for Pine Weevil Control



Weevils are often the cause of diseases in pine trees. Contact the Regional Economy Promotion Section before cutting down a damaged tree. A portion of the expenses may be subsidized.

◇ **Inquiries:** Regional Economy Promotion Section Phone: 0797-38-2033

Information on Rubella Vaccinations

■ Partial Subsidy for the Rubella Vaccination Cost

◇ **Vaccination Period:** April 1, 2022–March 31, 2023

◇ **Amount of Subsidy** (one vaccination per person): 2,500 yen for the MR (measles-rubella) vaccine or 1,500 yen for the rubella vaccine (風疹ワクチン *fushin wakuchin*).

※ When paying for the vaccination, subtract the subsidy amount from the vaccination cost.

◇ **Eligibility:** Registered residents of Ashiya City who have never contracted rubella and meet one of the following criteria:

- ① Women over 20 years of age who are trying to conceive.
- ② Family members who live with an expectant mother, and who have never received the MMR (measles-mumps-rubella), MR, or rubella vaccine.



※ Women who are or who may be pregnant should not be vaccinated. Pregnancy should also be avoided for two months after the vaccination.

◇ **Registration:** Various medical institutions

■ Free Rubella Vaccination Coupons for Eligible Male Adults

Coupons for a rubella antibody test and rubella vaccination (風しんにおける抗体検査券および予防接種クーポン券 *fushin ni okeru kotai-kensa-ken oyobi yobo-sesshu-kupon-ken*) are being mailed to those eligible. Those who wish to be tested for rubella antibodies or wish to be vaccinated should bring their coupon to a medical institution.



◇ **Expiration Date:** March 31, 2023.

◇ **Eligibility:** Men born between April 2, 1962, and April 1, 1979.

◇ **Inquiries:** Health Center

Phone: 0797-31-1586

Subsidy Program for Arts & Culture Activities

Groups or individuals who are competing as an Ashiya City representative at a prefecture-wide level or higher in such events held by a public organization may be eligible for a subsidy. The amount of the subsidy will depend on such matters as the size and reputation of the competition.



◇ **Period:** April 2022–March 2023

◇ **Inquiries:** Promotion of Citizen Participation and Collaboration Office

Phone: 0797-38-2007

Green Fund Campaign



Please make contributions to the Green Fund (緑の募金 *Midori no Bokin*). Funds raised are used to make our schools greener, etc.

◇ **Campaign Periods:** Spring Campaign Period March 1–May 31
Autumn Campaign Period September 1–October 31

◇ **Inquiries:** Ashiya City Greening Promotion Committee
c/o Roadside Tree Section

Phone: 0797-38-2470





Ashiya Open Garden 2022



In the 17th Anniversary of Ashiya Open Garden this year, flowerbeds and private gardens in the city will be open to public at 163 spots ! Why not enjoy the pretty flowers and feel the spring of Ashiya ?

* Some gardens may be open only for limited days or times.

❁ **Period and Time:**

April 16th –20th / May 11th –15th 10:00 a.m.–4:00 p.m.

❁ **Brochures are available at the following places:**

Information Desk of City Hall /Laporte Citizens' Service Corner/Ashiya Grand Park / Regional Assembly Halls / Roadside Tree Section (E-28 Counter, 2F East Wing), etc.

❁ Why don't you choose the garden that you think is the most beautiful ? You are requested to complete the questionnaire from the brochure and put it into the collection boxes placed at the Assembly Halls and Roadside Tree Section

[Ashiya City Subsidy for Greenery works]

Half of the cost necessary for the greenery work (making greenery hedge, for example) in Ashiya city will be subsidized. (Up to 100,000 yen)

❁ Period: April 1st –February 28th, 2023

❁ Capacity: The first 20 applications

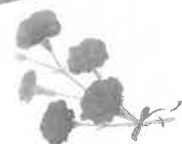
❁ Application: Fill in and submit the form (available at the counter of Roadside Tree Section)

* Will be judged.

❁ Inquiries: Roadside Tree Section (Phone: 0797-38-2470)



Gardening Classes at Ashiya Grand Park (*Sogo Koen*)



Content (Class name)	Date/Time	Cost	Application Deadline
① "Make a small herb garden"	Sun., April 17 th 10:30 a.m.–Noon	2,000 yen	5:00 p.m. Sun., April 10 th
② "Make a Welcome Board with pressed flowers"	Thu., April 21 st 10:30 a.m.–Noon.	2,000 yen	5:00 p.m. Thu., April 14 th
③ "Make a pot full of assorted pretty spring flowers"	Mon., April 25 th 1:30–3:00 p.m.	2,500 yen	5:00 p.m. Mon., April 18 th
④ "Let's enjoy growing vegetables (1)"	Thu., April 28 th 10:30 a.m.–Noon	500 yen	5:00 p.m. Thu., April 21 st
⑤ "Make a gift bouquet with preserved carnations"	Fri. (Holiday), April 29 th 10:30 a.m.–Noon	2,500 yen	5:00 p.m. Fri., April 22 nd

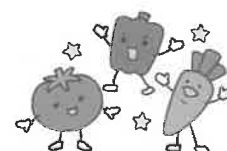
❁ Capacity: 15 people for each class

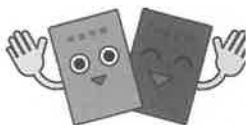
❁ What to bring: Writing materials and a large bag to carry the work home.

❁ How to apply: Visit, call/fax or E-mail to Ashiya Grand Park

❁ Location and Inquiries: Ashiya Grand Park (*Sogo Koen*)

(Phone: 0797-38-2103 / Fax: 0797-25-2026 / E-mail: ashiyasogo@mizuno.co.jp)





– For Those Retiring from a Company–
Switching to the National Pension Notification

When you retire from a company and make a switch from the Employee Pension to the National Pension, you should notify the Citizens' Section. If your spouse was your dependant, they must also switch to the National Pension.


- **Eligibility:** Individuals, 20 years or older and under 60 years of age, who have retired from a company
- **What to bring:** Employee Pension capacity loss certificate (A separation notice or Employment insurance capacity certificate admitted) / Identification document
 - * If you become a dependent of your spouse who is insured in the Employee Pension soon after your retirement, make the switch at your spouse's work place.
 - * If you have got a job at a company (and become insured in the Employee Pension), you need not make procedure at the city hall.
- **Inquiries:** Pension Subsection, Citizens' Section (Phone: 0797-38-2036)

– For Those Insured by National Health Insurance –
Submit Your National Health Insurance Income Declaration

National Health Insurance Income Declaration will be sent out to those eligible in April and June. Please submit it within the time limit. (The insurance premium depends on the Declaration made and each individual will be notified of the result in July.)

- **Eligibility:** Anyone who corresponds to either of the followings:
 - Someone who submitted a National Health Insurance Income Declaration in the previous fiscal year
 - Someone who has not declared an income
- * Declaration is necessary even for those who have no income, as it is used to reduce cost of insurance premiums or high-priced medical treatment.
- * Those who filed a final income tax return, declared residential tax or finished year-end tax adjustment at their work places do not need to declare.
- **Inquiries:** Insurance subsection, Insurance Section (Phone: 0797-38-2035)

– For Those Joining or Withdrawing from Health Insurance at their Work Places –
Notify the Insurance Section

- **Eligibility:** Anyone who corresponds to either of the followings
 - Someone who got a job at a company and became insured there
 - Someone who is uninsured due to retirement, change of employment pattern, or no longer a dependent, etc. (Scan the Code.) → 
- **What to bring:**
 - [Those who withdrew from the Company's Health Insurance]:
Health Insurance capacity loss certificate and Identification documents
 - [Those who joined to the Company's Health Insurance]:
The new Health Insurance recipient card / National Health Insurance recipient card / Identification documents
- **Inquiries:** Insurance subsection, Insurance Section (Phone: 0797-38-2035)





Application for Financial Assistance for School Attendance

Financial assistance for the cost of school supplies and commuting, outside school cost, etc. will be available for the parents or guardians of students who have difficulties attending municipal elementary or junior high school in Ashiya city due to financial reasons. (Scan the Code above.)

- **Eligibility:** Parents or guardians of students attending municipal elementary or junior high school in Ashiya city who fit any of the following criteria:



- (1) Welfare recipients, etc.
- (2) Child-care allowance recipients
- (3) Unemployed
- (4) Belonging to a family whose annual income is below base amount
- (5) The whole family annual income is expected to fall below base amount due to the sudden change in family budget (including the influence of COVID-19 spread)



- **How to Apply:** Bring or mail the completed application form (available at each elementary /junior high school or downloaded from the City's webpage) to the counter written below.

- **Application /Inquiries:** Management Section, Board of Education (Phone: 0797-38-2085)
(〒659-8501, address unnecessary)

School Attendance Incentive Grants for Orphans from Automobile Accidents

School attendance incentive grants are paid from Ashiya City Social Welfare "Yu-ai (友愛)" Foundation to elementary/junior high/senior high school students living in Ashiya city who lost a guardian in a car accident.

- **Payment amounts:** 5,000 yen per month for an elementary and junior high school student
10,000 yen per month for a high school student
- **Inquiries:** Child-rearing Promotion Section (Phone: 0797-38-2045)



Ashiya City Preparation Allowance to Enter University, etc.

(Application accepted after enrollment)

A preparation allowance is provided to those who have difficulties entering university, etc. due to economic reasons.

* Scan the code →



- ◆ **Eligibility:** Persons who fit all of the following conditions

- (1) Continuously living in Ashiya city for one year or longer.
- (2) Entered a university, a junior college, etc. in April 2022.

* A vocational school or graduate school is not eligible.

- (3) Having applied for the government's new system to support students in higher education and having been adopted in the first category



- ◆ **Amount of Provision:** Up to 200,000 yen (only one time per person)

* The amount of entrance fee minus the amount to be reduced or exempt in the new system will be paid.

- ◆ **How to Apply:** Submit the required papers to the counter written below.

- ◆ **Application/Inquiries:** Management Section, Board of Education
(Phone: 0797-38-2085)

Doctors on Call for Emergencies on Sundays and Holidays



● Evening Medical Care Rotation *8:00 p.m.-11:00 p.m. on Friday		
April 1	Nishiwaki Gastroenterology & Surgery Clinic (Internal Medicine/Surgery/Gastroenterology/Proctology)	☎ 0797-38-9891
April 8	Ashiya Taira Clinic (Internal Medicine/Cardiology)	☎ 0797-38-7291
April 15	Maple Kodomo Clinic (Pediatrics)	☎ 0797-25-0911
April 22	Pain Clinic Ashiya Piccolo Clinic (Internal Medicine)	☎ 0797-25-1347

● Be sure to wear a mask when you visit the doctor or a hospital.

● First make a call when you have a fever. * Emergency Relief Center ☎ #7119 (24/7)

■ Designated Emergency Hospital

※IPS Phone: 078-331-7119

Ashiya Municipal Hospital (Surgery/Internal Medicine) ☎ 0797-31-2156

Minami-Ashiyahama Hospital (Surgery/Internal Medicine) ☎ 0797-22-4040

Ashiya St. Maria Hospital (Orthopedics/Surgery/Internal Medicine) ☎ 0797-23-1771

■ Holiday Emergency Clinic (Internal Medicine/Pediatrics)

☎ 0797-21-2782

(5-13 Kimmitsu-cho, Ashiya City) (9:00 a.m.-5:00 p.m. on Sundays, public holidays, during the year-end and New Year's holidays)

■ Amagasaki Health Medical Care Foundation Holiday/Night Emergency Medical Care (Ear, Nose and Throat)

☎ 06-6436-8701

(3-15-20 Mizudo-cho, Amagasaki City)

(9:00 a.m.-4:00 p.m. on Sundays and public holidays / 6:00 p.m.-8:30 p.m. on Saturdays)

(9:00 a.m.-5:30 a.m. the next morning during the year-end and New Year's holidays)

■ Amagasaki Health Medical Care Foundation Holiday/Night Emergency Medical Care (Ophthalmology-Eye Department)

☎ 06-6436-8701

(3-15-20 Mizudo-cho, Amagasaki City)

(9:00 a.m.-4:00 p.m. on Sundays and public holidays)

(9:00 a.m.-5:30 a.m. the next morning during the year-end and New Year's holidays)

■ Dental Center (14-9 Kurekawa-cho, Ashiya City)

☎ 0797-31-0658

(9:00 a.m.-11:30 a.m. on Sundays, public holidays, during the year-end/New Year's holidays)

■ Kobe Children's Primary Emergency Medical Center (Pediatrics) ☎ 078-891-3999

(1-4-1, Wakinohama Kaigan-dori, Chuo-ku, Kobe City) (Located in "HAT KOBE")

Consultation Days	Reception Hours
Monday-Friday	7:30 p.m.-6:30 a.m. the next morning
Saturday	2:30 p.m.-6:30 a.m. the next morning
Sunday & Public holiday The year-end/New Year's holidays	8:30 a.m.-6:30 a.m. the next morning



Subsidy for Wigs / Breast Correction Tools for Cancer Patients

Cost for the medical wigs and breast correction tools will be subsidized for the patients who were diagnosed with cancer and received treatments. (Scan the code above for more details.)

- ◆ Subsidized Cost: Medical Wig 50,000 yen (One wig per person)
Breast Correction Tools (Compensatory lingerie 10,000 yen /
Breast prostheses 50,000 yen; One per person)
- ◆ Eligibility: Ashiya citizens who purchased the medical wig or breast correction tools eligible for subsidy (There will be application deadline and income restrictions.)
- ◆ Inquiries: Health Center (Phone: 0797-31-1586) (Scan the Code above for more details.)



Subsidy for Medical Treatment of Specified Diseases

When a patient is hospitalized or treated as an outpatient due to a specified disease, a subsidy is available to those eligible starting from the month of diagnosis. The eligible individual needs to apply for the subsidy.

- ◆ Eligibility and Content: Anyone who has been living in Ashiya for more than six months successively and is under medical treatment for the following diseases.

<Diseases eligible for subsidy when hospitalized>

Lung fibrosis, Idiopathic cardio-myopathy, Immunodeficiency syndrome,
Meniere's disease, Chronic nephritis, Chronic pancreatitis and Liver cirrhosis/
Chronic hepatitis among the intractable hepatitis.

<Diseases eligible for subsidy when regular hospital visits are necessary>

Sudden deafness, Nephrosis syndrome and Malignant Renal sclerosis

- ◆ Subsidy amount: 5,000 yen per month
- ◆ Application and Inquiries: Health Center (Phone: 0797-31-1586)



Ashiya Municipal Hospital Complete Physical Examination

We will provide new optional examinations from April; you should use them !

■ Capacity: 6 persons / day ■ Place: Ashiya Municipal Hospital

New optional examinations available from April:

Colonoscopy 26,400 yen / Sedation (Upper endoscopy) 4,400 yen / Sleep apnea test
8,800 yen / Rheumatism examination (Anti-ccp antibody) 3,300 yen / Thyroid examination
(TSH) 2,200 yen

Other optional examinations:

Brain scan 26,400 yen / Helicobacter Pylori examination 1,320 yen / Tumor Marker
(4,400 yen for men; 6,160 yen for women) / DXA 3,960 yen / Body fluid volume measurement
1,650 yen / Carotid echo examination 4,400 yen / HPV examination (for women) 5,830 yen /
Visceral Fat measurement 3,300 yen

* Scan the code shown below for more details.

- Application and Inquiries: Desk of Examinations, Ashiya Municipal Hospital
(Phone: 0797-31-2156; 2:00-4:30 p.m. Weekdays)



Postpartum Care Services

Mental/physical health care and health management for a new mother and child are provided at 5 facilities with postpartum Care Service in the city. Consultation for use is available even during pregnancy

■ Place: Scan the Code →



■ Eligibility (Who can use the Service?):

Mother (Ashiya city resident card holder, after childbirth and leaving hospital) and baby (born within the past 4 months) who correspond to any of the following criteria.

- ◆ Experiencing anxiety about postpartum physical recovery
- ◆ Feeling uneasy about child care
- ◆ In need of advice regarding day to day life , rest and nutrition, etc.
- ◆ Those considered to be in need of other special support

■ Cost: Amount of copayment is determined based on the previous fiscal year's taxation status

■ Inquiries: Health Center (Phone: 0797-31-1586)



My Number Card On-Site Application (Weekdays only as a rule)

City staff will visit groups or organizations that consist of 5 or more members who wish to apply for My Number Card, will take a photo for application and accept applications free of charge. It is available until the end of March 2023.

◆ Inquiries: My Number Desk, Citizens' Section (1F City Hall North Wing)

(Phone: 0797-38-2070)



Rabies Group Vaccination Cancelled

Rabies group vaccination for the current year will be cancelled, but be sure to have your dog vaccinated once a year at your local veterinary clinics, etc.

■ Inquiries: Environment Section (Phone: 0797-38-2050)



Recruiting Project Team Members for "Gathering of 20-year-olds" (Coming of Age Ceremony)

◆ Eligibility: Those who will newly come of age, born between April 2, 2002 and April 1, 2003

◆ Application: Contact us by Thursday, April 28th.

◆ Application and Inquiries: Lifelong Learning Section (Phone: 0797-38-2091)



Accepting Enrollment as *Hitori Hitoyaku* Workers ("Hitori Hitoyaku": "One role for each individual")

If you are enrolled as a *Hitori Hitoyaku* Worker, points are given to you according to volunteer activities you conducted and they can be turned into money at the end of fiscal year (Up to 5,000 yen per year, depending on conditions.)

☐ Eligibility: Anyone 18 years of age or over

☐ Cost: 500 yen (Annual insurance premium payment)

☐ Application and Inquiries: Ashiya City Social Welfare Council (Phone: 0797-32-7525)



The 80th Citizen's Yose by Katsura Yonedanji

- Date & Time: Fri., June 17, 6:30 p.m. (Doors open at 5:45 p.m.)
- Place: Luna Hall
- Program: An introduction of the musical accompaniment in Kamigata Rakugo
(a comic storytelling developed in Osaka and the vicinity)
"Sagitori" "Hatena no Chawan" "Tachigire Senko"
- Performers: Katsura Yonedanji, Katsura Sankichi,
Katsura Danjiro (narimono), Asano Miki (shamisen)
- Ticket Fee: Advance ticket 2,500 yen, Same-day ticket 3,000 yen (All Seats Reserved)
- Application: Tickets are available from 9:00 a.m. on Fri., April 8.
- <Sales Locations>: Ashiya Citizens' Center Office, City Hall Shop,
LAWSON Ticket (L-code 53543)
- Inquiries: Luna Hall Project Desk (Phone: 0797-35-0700)



Application for AC United Kids' Tennis School

- ☐ Date, Time, Eligibility & Capacity: Every Wednesday and Friday from April
 - (1) J1 Class (4-year-olds and older): 3:00-4:00 p.m./8 children
 - (2) J2 Class (6-year-olds and older): 4:10-5:10 p.m./10 children
 - (3) J3 Class (8-year-olds): 5:20-6:50 p.m./10 children
 - (4) Training 1 Class (8-year-olds and older): 5:20-7:20 p.m./10 children
 - (5) Practice Session (junior school students and older): 7:20-9:00 p.m./12 people

*Bring your own tennis racket and wear tennis shoes.
- ☐ Place: Ashiya Park Tennis Courts
- ☐ Fee: (1)(2) 4,500 yen (3) 6,000 yen (4) 8,000 yen (5) 1,500 yen (per lesson)
- ☐ Things to bring: Clothes fit for sports, sport shoes, a cap, a water bottle, a towel
*Tennis rackets are available at the site.
- ☐ Application: Fill out the application form and fax or submit it to the reception counter indicated below. Forms are available at the reception counter or can be downloaded from its website. Accepted at any time.
- ☐ Inquiries: Ashiya Park Tennis Courts (Phone : 0797-34-8886/Fax: 0797-34-8884)



We seek your cooperation in continuing infection prevention measures

- (1) Avoid the "three Cs" (closed spaces, crowded places, and close-contact setting)
- (2) Wear masks.
- (3) Wash hands with soap.
- (4) Disinfect hands and fingers.



密集場所



密接場面



密閉空間



マスクの着用



石けんによる
手洗い



手擦消毒液アルコール
による消毒の励行

「3つの密(密集・密接・密閉)」の回避

Event at Tanizaki Junichiro Memorial Museum of Literature

Spring Special Exhibition : “谷崎とおんな、谷崎のおんな ～女性に縁どられた文豪～” (“Tanizaki, a Great Writer Framed by Women”)



A lot of women passed through the life of TANIZAKI. The exhibition will throw light on the relationship between the women and life of the great author in the world of his works.

■ Exhibition Period: April 2nd ~ July 24th

■ Place/Inquiries: Tanizaki Junichiro Memorial Museum of Literature
(12-15 Ise-cho 659-0052)

(Phone: 0797-23-5852/ Fax: 0797-38-3244)

← Ms. TANIZAKI Matsuko,
at her residence in
Uchide, Ashiya

Reading Time for Adults with Temporary Childcare

- ☐ Date and Time: Mon., April 18th /Tue., April 19th 10:00.-11: 30 a.m.
- ☐ Location: Gender Equality Center (With-us Ashiya)
- ☐ Eligibility: Parents (including grandparents) with preschool children over 6 months
- ☐ Cost for day-care: 300 yen per child / Up to 3 children
- ☐ How to Apply: Contact us by Wed., April 7th
* Lottery will be held if the number of applicants exceeds the quota.
- ☐ Inquiries: Gender-Equality Center
(Phone: 0797-38-2023) <E-mail: josei-ce@city.ashiya.lg.jp>



Opening of Ise Rainbow Children's Garden (Ise Niji Kodomo-en)

Ise Rainbow Children's Garden, a private certified combined child daycare kindergarten opened on April 1st

- ☐ Location: 13-14 Ise-cho
- ☐ Inquiries: ▪ Ise Niji Kodomo-en (Phone: 0797-26-8631)
(Hinode Fukushi-kai, a social welfare corporation) /
▪ Facility Maintenance Subsection, Child-rearing Section
(Phone: 0797-38-2180)



Aisai Kodomo-en Scheduled to open in June

Aisai Kodomo-en, a private certified combined child daycare kindergarten will open in June.

- ☐ Place: 10-3 Asahigaoka-cho
- ☐ Inquiries: ▪ Midorigaoka Hoiku-en (Phone: 0797-25-2525),
(Yamazen Fukushi-kai, a social welfare corporation) /
▪ Facility Maintenance Subsection, Child-rearing Section (Phone: 0797-38-2180)



Ashiya School Lunch Recipes

■ **Harumaki Spring Rolls**

□ **Ingredients**

10 spring roll wrappers
 250 g ground pork
 10 g dried *shiitake* mushrooms
 100 g boiled bamboo shoots
 100 g carrots
 10 g minced ginger
 50 g *nira* Chinese chives
 50 g *bifun* rice noodles
 (boil and drain)
 cooking oil for stir-frying
 flour as needed

➤ **Seasoning:**

4 tsp *koikuchi* dark-
 colored soy sauce
 ¼ tsp salt
 pepper to taste
 1 Tbsp sesame oil
 1 Tbsp sake



➤ **Helpful Tip:** Let the filling cool before wrapping the spring rolls to prevent the wrappers from tearing.

□ **Directions:**

1. Soak dried *shiitake* mushrooms in water to re-hydrate and slice into strips. Slice bamboo shoots and carrots into bar rectangles. Cut *nira* chives into 2 cm long pieces.
2. First, cook the filling. Heat oil and ginger. Add ground pork and stir-fry. Add and stir-fry the carrots, *shiitake* mushrooms, and bamboo shoots. Mix in the ingredients for Seasoning.
3. Add *bifun* noodles (firmly boiled and drained beforehand) and stir-fry.
4. Add the *nira* chives, turn off the heat, and let the filling cool down.
5. Bring spring roll wrappers to room temperature. Divide the filling into 10 equal portions and place each portion on a spring roll wrapper. Wrap the filling in the spring roll wrapper to make a parcel (see photo).
6. Dissolve flour in water to use as glue at the end of the roll.
7. Deep fry in oil at 170°C until crispy.



Accepting Donations for a Charity Bazaar

A charity bazaar will be held on May 28 at the "With-us Ashiya Festa 2022." Please donate items such as new and unused children's goods, clothing, gift items, and other miscellaneous items. Food items must have an expiration date of June 28, 2022, or later. No alcoholic beverages, office automation equipment, or electrical appliances are accepted. All proceeds from the charity bazaar will be donated to organizations supporting victims of domestic violence.

◆ **Date & Time:** April 1–30, 9:00 a.m.–5:30 p.m. (except Sundays and public holidays)

◆ **Place & Inquiries:** Gender Equality Center Phone: 0797-38-2023



Beware of Paralytic Shellfish Poison

Paralytic shellfish poison may be detected, especially in April and May, in *asari*, Japanese little-neck clams and other bivalves in Osaka Bay including the coast along the city. The toxin is highly heat-resistant and does not weaken when cooked.

Please check the monitoring result on the official website and take precautions.



Inquiries: Fisheries Technology Institute

Hyogo Prefectural Technology Center for Agriculture, Forestry and Fisheries
(Phone: 078-941-8601)

Monthly First-Aid Training Class



- ◇ Date and Time: Sun., April 24 9:30 a.m. – 12:30 p.m.
- ◇ Place: Main Fire Department
- ◇ Contents: AED cardiopulmonary resuscitation and other emergency aids
- ◇ Capacity: 20 people Eligibility: Those who live, work, and study in Ashiya
※Certificates will be given to participants.
- ◇ Application: Contact us at the number below by 5:30 p.m. on April 22.

Inquiries: Fire Department Headquarters, Emergency Section (Phone: 0797-32-2345)

Instagram of THIS MONTH



atog89さん



nokonekonokoさん

We are accepting your favorite spots in Ashiya. Please submit at #ashiyagram2022
The photos will be published in this feature of the *Koho Ashiya*.

- ◇ The acceptance will be noticed directly from the account @ashiyacity_official
- ◇ Photos must be taken by the applicant him/herself and must be admitted by the subject (in case of person).

PUBLISHED BY

Ashiya Municipal Shio-Ashiya Exchange Center
(Designated administrator: Ashiya Cosmopolitan Association)

7-1 Kaiyo-cho Ashiya
Phone : 0797-25-0511 Fax : 0797-25-0512