

# THE COSMONET

June 2021 (vol.287)

*The following articles are taken mainly from "Koho Ashiya" – the bulletin of Ashiya City (June issue). It is, of course, a Japanese edition, and translated into English by a voluntary group from the Ashiya Cosmopolitan Association. Please understand that some phone numbers listed under the various events are staffed by people who may not speak English.*



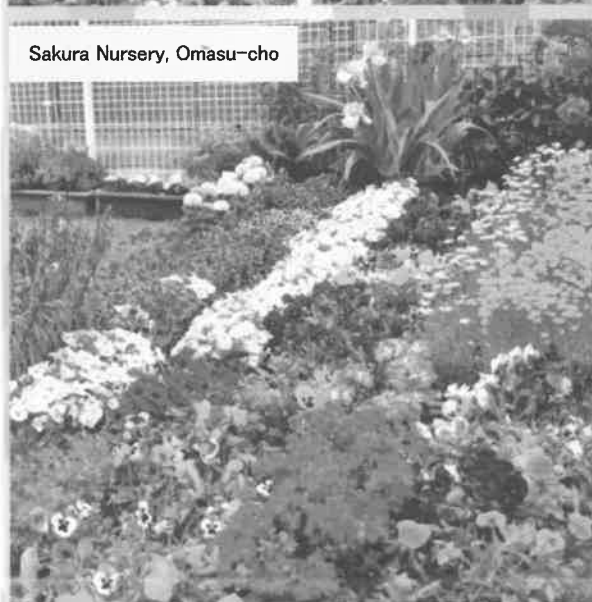
Okuike Minami-cho



Wakaba-cho (若葉町)



Kaiyo-cho



Sakura Nursery, Omasu-cho

## Ashiya Open Garden 2021

It was a big success this year thanks to your cooperation. Please enjoy some of the lovely scenes of elaborate gardens shown in these photos.



Roses at Iwagahira Park  
Iwazono-cho



Wakaba-cho



Asahigaoka-cho (丘町)



Daito-cho (町)



Shiomi Elementary School, Shiomi-cho

Inquiries: Roadside Tree Section (Phone: 0797-38-2470)

## Toward a Society where People can show their Individuality and Abilities

– Regardless of gender –

### < On fixed attitudes towards the division of roles based on gender >

Such words as “*Ikumen*”, men raising children, or “*kajimen*”, men doing housework, or “women’s advancement” have become very familiar. Still the ideas that husbands should work outside the home and wives should keep the house still remain in Japanese society.

According to the data of a global comparison of average weekly time spent on housework and childcare by parents who have children under 6 years old, in Sweden which is said to be easy to raise children, there is not much difference between husbands and wives. In Japan, wives spend far more time on housework and childcare than their husbands.

This way of thinking based on gender, which has formed in our consciousness over a long period of time, is called “fixed role attitude”. Have these thoughts unconsciously limited the potential of yourself and others? We think; I have to be good at cooking because I’m a woman or I have to be a good breadwinner because I’m a man.

### <Take a new look at this rigid way of thinking>

In order to realize a gender-equal society to help everyone, regardless of gender, to be able to live their own lives, we need to take a new look at this attitude.

With the increase of double-income family, we are living in an age when we need to broaden our cooperation such as in work, housework, childcare and community activities. To rethink “fixed gender role attitudes” will enable women to develop a fulfilling life and career plan. It will also remove the pressure from men that they should be the chief financial support of the family and expand their options for living a life other than work. In order to avoid unconsciously limiting the potential of yourself and others, let’s gradually rethink the stereotypical attitudes based on gender.

Inquiries: Human Rights and Gender Equality Section (Phone: 0797-38-2023)

### Interviews with people who are active regardless of gender (Partly Abridged)

Try to challenge yourself if you have something you want to do

Marie Yano—A mother of 2 children who started a business as a real estate stylist

I felt satisfied being a full-time mom, however, gradually I had a feeling I was limited living in 5km radius. It changed when I attended the “Business Start-up Seminar by Ashiya City Association of Commerce and Industry” and “ASHIYA RESUME”, I was able to make the image of entrepreneurship a reality.



At first I was worried that I might cause trouble for my family, but by having a sense of mission in society, I’ve come to value my family more. I can enjoy housework and childcare in a more balanced way than before. Many women are often presented with the choices of their role in the family or work in society. If you have something you really want to do but have given up, you should challenge yourself. It is important to start with a small goal.

**Parenting has nothing to do with whether you're a mom or a dad**  
**Naoki Katsube –Busy raising 2 children, 22 months old and 5 months old**

I didn't imagine that I would take childcare leave. Having discussed childcare with my wife, I decided that although I would be working for decades I could only take childcare leave now. As I am now engaged in childcare, I am convinced I can do it if I want to. The only problem is that it is hard to make "mom friends" at the park. I think it is important to have a place where dads can casually meet each other. The percentage of men who take childcare leave is still low. I hope for a society where it is natural for men to be involved in the development of their children for as long as possible.



**Adopting women's point of view to the disaster prevention**  
**Chikako Kitagawa—a school nurse and a disaster prevention specialist**

When a disaster occurs, it is important not only to rely on the power of the government but also the power of the community. I want to be a mediator for spreading information to the community about what to do in the case of, for example, an earthquake. When a disaster occurs during the daytime on weekdays, people who can move quickly are mothers who are raising children and the elderly. Therefore, it is important to create a disaster prevention organization in the community that reflect the ideas and voices of women. If there is a female disaster prevention specialist in the neighborhood, you can feel free to ask her for help. In the management of evacuation centers we should review the fixed division of role where women are in charge for serving food. If we can make use of our strong points, it will lead to the creation of a community with strong disaster prevention capability.



**To create a society where male childcare workers can work comfortably**  
**Shogo Ohbayashi – Working as childcare worker at Seido Kodomo-en**

Nursery school is the first place where children have contact with society. I wanted to become a childcare worker because I wanted to be involved with children. I'm not good at playing the piano, but I'm good at playing with children. Regardless of gender, teachers should be able to cover each other's weakness. I hope male teachers will bring new ideas and smoother relationships to a workplace with many women. Childcare has the appeal of being able to experience the development of children. I think many men don't consider becoming a childcare worker from the beginning of their career choices. I hope that children want to become childcare workers in the future when they see me working hard.



## Men and Women in a Decent Society



In the future society, we will be confronted with different unexpected situations similar to the present situation caused by the New Corona virus. To live with dignity, it is important not to look at things through preconceived notions that women should be “family first” or men should be “tough”. Why are the majority of women reconciled to unstable employment? Why are single mothers or elderly women often reduced to economic difficulties? We must face up to the reality and act flexibly on each issue. It is said that young people in Japan have less self-confidence and self-worth than in other countries. I think this is a reflection of the adult way of life that men and women are supposed to live in such and such a way. Instead of ignoring young people, we should gently advise young people to be kinder to themselves and their surroundings. Instead of criticizing each other for our weak points, we have to develop the abilities to contribute our share to society and help others with using our strong points.

A gender-equal society is one in which both men and women share the social challenges they face, and empathize with the difficulties faced by others and help each other. I believe that having three “S”, SHARE, SYMPATHY, and SUPPORT, we will revitalize our society and make it easier to live in in the future.

Mariko Bando: Former vice-governor at Saitama Prefecture  
Chairperson and President of Showa Women’s University

### Lecture by Mariko Bando – Ashiya City Gender Equality Week: June 23 –29

#### **Be strong and gentle– Creating a Decent Society –**

- ◇ Date and Time: Sat., July 3 1:30 – 3:00 p.m. The door opens at 1:00 p.m.
- ◇ Place: Kamimiyagawa Cultural Center Capacity: 100 people
- ◇ Belongings: Slippers or indoor shoes and shoe bag
- ◇ Application: Apply by phone: Application is acceptable from June 1. Except on Sundays.



Childcare for 3 children from 6 months to preschoolers.

Please make a reservation by phone by June 30.

Inquiries: Human Rights and Gender Equality Center (Phone: 0797-38-2055)



### **Film: Mama o yametemo iidesuka? (Can I stop being a mom?)**

*This is a story of a mother and her family who are troubled by parenting, but still love their child and look forward to the future.*

- ◇ Date and Time: Sat., June 26 ①10:00 – 11:45 a.m. ②1:15–3:00 p.m. ③3:45–5:30 p.m.
- ◇ Place: Gender Equality Center (With-us Ashiya) Capacity:40 people
- ◇ Application: Apply by phone. Application is acceptable from June 1 except on Sundays.

Childcare for 3 children from 6 months to preschoolers.

Make a reservation by phone no later than June 23.

Inquiries: Human Rights and Gender Equality Center (Phone: 0797-38-2055)

## **Ashiya Zero-Carbon City Declaration** **～Aiming for net-zero carbon emissions by 2050～**

Ashiya City has developed into a city with a favorable environment, surrounded by the rich nature of the Rokko mountain range and the Seto Inland Sea. We have spearheaded the efforts to reduce greenhouse gas emissions through energy-saving measures and urban greening, based on our basic greening plan and Ashiya City's environmental planning.

Recently, as a result of global warming, large-scale disasters have been affecting all parts of Japan, such as heat waves and heavy rainfalls. Fighting climate change is so urgent for each of us to protect our lives.

In order to pass on the beautiful city of Ashiya to future generations and promote sustainable city planning, it is important to work together with citizens and business people, aiming for a zero-carbon society as a final goal.

Therefore, we hereby make “Ashiya Zero-Carbon City Declaration” with the aim of achieving zero carbon emissions by 2050.

- (1) We will promote energy efficiency and utilize renewable energy to reduce overall greenhouse gas emission to zero by 2050.
- (2) We will work on “COOL CHOICE.”
- (3) We will continue to create a city full of flowers and greenery.

June 1, 2021 Ashiya City

### **●What is the Zero-Carbon City Declaration?**

It is a declaration by cities that they will aim to reduce greenhouse gas (carbon dioxide) emissions to net zero by 2050. Net-zero carbon emissions indicate achieving a balance between artificially emitted GHG (greenhouse gas) and naturally absorbed GHG by forests.

### **●The current state of the world and Japan's initiatives:**

As a result of the climate change that we have seen due to global warming, natural disasters all over the world are increasing in number and severity, including heavy rainfalls and heat waves. We are now approaching a situation that can be called a climate emergency, and nations around the world are striving to stop global warming. In October, 2020, the Japanese government pledged to reduce overall greenhouse gas emission to zero by 2050 and aim to realize a carbon-free (carbon neutral) society in 2050. In achieving our goal, we are making all possible efforts to create a green society with public and private sectors.

### **●Ashiya City's Initiatives:**

- ◆ Installing energy-saving or renewable energy equipment at the time of renewal or renovation of public facilities
- ◆ Changing street lights to LED



- ◆ Greening projects based on the “Declaration of Ashiya Garden City”
- ◆ Environmental study such as energy-saving projects at schools

We will advance our efforts to realize a carbon-free society together with citizens and business people.

■Inquiries: Environment Section (Phone: 0797-38-2051)

## Why don't you start with what you can do that fits your lifestyle?

### ●“COOL CHOICE”



In 2015, with the participation of all countries, the Paris Agreement which aims to countermeasure climate change from 2020 was adopted. The common goal is to keep the global temperature increase to below 2 degrees Celsius above pre-industrial levels and to pursue efforts to limit the temperature increase even further to 1.5 degrees Celsius, simultaneously proposing net zero greenhouse gas emissions in the second half of the century. The Japanese government has been promoting “replace with eco-friendly products”, “choose eco-friendly services” and “choose eco-friendly lifestyles” to reduce greenhouse gas emissions. “COOL CHOICE” is a national movement that encourages “wise choices” that contributes to a carbon-free society.

### ●EFFORTS & ACTIONS TO PROMOTE “COOL CHOICE” (WISE CHOICE)

#### (1) Replace with eco-friendly products such as:

- LED lighting, Air conditioner, Refrigerator, Eco-car
- High-efficiency water heater, Water-saving toilet
- New construction of highly-insulated and airtight housing, Renovation



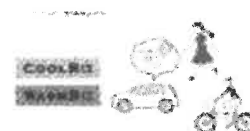
#### (2) Choose eco-friendly services such as:

- Public transportation    ■Car sharing
- Low-carbon logistics services    ■Visualization by smart meters



#### (3) Choose eco-friendly lifestyles such as:

- Cool Biz/Warm Biz    ■Cool share/Warm share
- Eco drive/Use of bicycle
- Conservation and Utilization of forests, villages, rivers and oceans

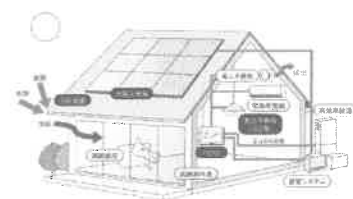


### ●ZEH (ZERO ENERGY HOUSE)

A Zero Energy House (ZEH) is a highly-insulated and highly efficient house that consumes less energy than it produces on an annual basis by creating renewable energy, usually through photovoltaic cells on the roof. If you build a new house or make home renovations that meet the requirements of ZEH, you are eligible to receive a government subsidy. Starting this fiscal year, a municipal subsidy of 200,000 yen per home will also be available.

※For further information, see the city's website or contact us by phone.

■Inquiries: Environment Section (Phone: 0797-38-2051)



## Information on COVID-19 Vaccination for Seniors Aged 65 and Above

We start accepting reservations for eligible people aged 65 and older by age group.

■ **Eligibility:** Registered residents of Ashiya City who were born before April 1, 1957 and will reach at least 65 years old in Fiscal Year 2021

■ **Reservation Starting Date & Hours:** From 9:00 a.m. each day



Age Group	Mass Vaccination Venues Ashiya Municipal Hospital	Individual Medical Institutions
<b>85 and above</b> (born before April 1, 1937)	<b>Currently accepting</b>	<b>Thu., June 17</b>
<b>80 and above</b> (born before April 1, 1942)	<b>Wed., June 9</b>	
<b>75 and above</b> (born before April 1, 1947)	<b>Mon, June 14</b>	
<b>65 and above</b> (born before April 1, 1957)	<b>Thu, June 17</b>	

\* At the beginning of the reservation period, you may have difficulty getting through over the phone. However, enough vaccines will be supplied for all elderly people. We'd like to ask your kind patience for the time being.

\* Vaccination at individual medical facilities starts on Mon., June 28.

\* You cannot change your appointment unless in exceptional circumstances. (e.g. you feel unwell) We appreciate your cooperation in preventing vaccine doses from being wasted.

\* If you need help because of difficulty hearing or speaking Japanese, fax us for consultation or appointments. Consultation is available before reservation starting date. (Fax: 0797-31-1018)

## ■ How to Make A Reservation

**Online or Telephone Reservation is Available.**

Please make sure to have your vaccination ticket ready, and make a reservation online or over the phone. When you call, your 10-digit inoculation number is necessary. You cannot make a reservation at the window or by fax.

• **Ashiya City COVID-19 Vaccination Call Center (Phone: 0797-31-0655)**

Mon.-Fri. 9:00 a.m.-5:30 p.m./Sat. & Sun. 10:00 a.m.-6:30 p.m.

• **Online (Web) Reservation**

芦屋市 ワクチン接種 予約 検索

## ■ Persons with Underlying Conditions & Persons Under 65

The vaccination is scheduled to be rolled out in the following order: ① Health care

workers ② Elderly people aged 65 and above ③ Those with underlying conditions, those working at elderly care facilities and those aged 60 to 64 ④ People aged 16 to 59  
 \* Regarding the vaccination program, we will notify you as soon as possible. We assure you that everyone will get their shot.

## ■ Self-Defense Forces Osaka Large-scale Inoculation Center (Osaka Center)

- Hyogo Prefecture residents aged 65 and older will be eligible to make reservations from Mon., May 31.
- If you get an appointment at the center, please be sure to cancel your vaccination reservation of Ashiya City in order to avoid double booking.
- For details, see the Defense Ministry website.

## ■ Vaccination Venues

**All reservations should be made online or by calling the Call Center below.**

When you call, make sure to have your vaccination ticket ready and book only your first dose. You should schedule your second dose three weeks later at the same venue, the same day of the week and the same time as your first dose. If an emergency warning is issued, check the city's website or call the center for inquiries.

- **Ashiya City COVID-19 Vaccination Call Center (Phone: 0797-31-0655)**  
 (Mon.-Fri.: 9:00 a.m.-5:30 p.m.) (Sat. & Sun.: 10:00 a.m.-6:30 p.m.)  
 ※ Be careful not to dial the wrong number.
- **Online (Web) Reservation**

### 【Mass Vaccination Venues】

Appointment Schedule for First Dose	Monday–Friday		Saturday	Sunday
Health and Welfare Center (14–9 Kurekawa-cho)	July 5–9	July 26–30	June 12–Aug. 7	June 13–Aug. 8
	August 16–20			
Ashiya Citizens’ Center (8–24 Narihira-cho)	July 12–16	August 2–6		
	August 23–27	Except every Tue.		
Shio–Ashiya Exchange Center (7–1 Kaiyo-cho)	July 19–23	August 9–13		
	Except every Wednesday			
Hours	1:30–4:30 p.m.		1:30–6:30 p.m.	10:00 a.m.–1:00 p.m.
				1:30–6:30 p.m.

- ▶ Please use public transportation when coming to the venue.
- ▶ You will be notified of further information on vaccination schedule through *Koho Ashiya* July issue or the city's website.
- ▶ To avoid waste, cancelled vaccine doses will be used to inoculate staff at mass



vaccination sites according to the government's notification.

**【Ashiya Municipal Hospital】 (39-1 Asahigaoka-cho)**

☐ Vaccination Venue: South Parking B1 ☐ Hours: Mon.-Fri. 1:30-4:30 p.m.

**【Individual Medical Facilities】 (Vaccination starts from June 28.)**

Check the hours to make a reservation for the vaccine through Call Center or online.

\* You cannot make an appointment at each medical facility.

\* Refrain from making inquiries about reservations by phone or visiting.

**【Medical Facilities where anyone can get vaccinated】**

1. Aoitōri Clinic	12-24-2 Nangu-cho
2. Ashiya ® Ida Internal Medicine Clinic	11-5-301 Kimmitsu-cho
3. Ashiya Ekimae Ono Internal Medicine Clinic	5-22-1F Ohara-cho
4. Ashiya Grande Clinic	3-5 Maeda-cho
5. Ashiya Sunny Clinic (Internal Medicine)	2-8-101 Midorigaoka-cho
6. Ashiya St. Maria Clinic	5-20 Ohara-cho
7. Ashiya St. Maria Hospital	8-22 Asahigaoka-cho
8. Ashiya Taira Clinic	6-19 Kawanishi-cho
9. Arigato Ashiya Clinic	3-24-1-1F Funado-cho
10. Imamura Clinic	20-19-2F Ohara-cho
11. Omori Clinic	3-4 Hamakaze-cho
12. Kawamori Pediatric Clinic	6-22 Takezono-cho
13. Sakamoto Urology Clinic	39-1 Asahigaoka-cho
14. Tada Clinic	13-5 Uchidekozuchi-cho
15. Nagamatsu Clinic	10-18 Matsunouchi-cho
16. Nagaretani Internal Medicine Clinic	3-12 Tsuji-cho
17. Matsuba Clinic	1-4 Midorigaoka-cho
18. Matsumura Internal Medicine Clinic	7-27 Ise-cho
19. Mimura Clinic	15-14 Ohara-cho
20. Muramatsu Clinic	10-5 Hama-cho
21. Mori ENT Clinic	10-24 Nangu-cho
22. Yonekura Clinic	1-29-5F Funado-cho
23. Watanabe Obstetrics & Pediatric Clinic	6-21 Funado-cho

**【Medical Facilities only for those who are registered at one of the facilities below】**

24. Ashiya Oku Endoscopy Clinic	1-25-1F Omasu-cho
25. Ashiya Hashimoto Clinic	6-31 Narihira-cho
26. Ashiya Yamamoto Clinic	29-19 Higashiyama-cho
27. Azumi Clinic	6-23 Matsunouchi-cho

29.Ikemoto Cerebral Neurology Clinic	20-19-1F Ohara-cho
30. Ito Clinic	8-19 Nishi-Ashiya-cho
31. Women' s Clinic Nunotani	1-29-5F Funado-cho
32.Ueda Internal Medicine Clinic	2-24 Asahigaoka-cho
33.Uetsuka Ear, Nose, Throat Clinic	8-10 Uchidekozuchi-cho
34.Ko Internal Medicine Clinic	5-8-2F Higashiyama-cho
35.Sawada Clinic	8-12 Kawanishi-cho
36. Shigenobu Clinic	11-3 Nishiyama-cho
37.Sujishi Internal Medicine & Dermatology Clinic	7-26 Iwazono-cho
38.Suyama Neurosurgery Clinic	7-1-3F Seido-cho
39.Chabata Clinic	4-4-1F Kasuga-cho
40.Tominaga Clinic	10-20 Kimmitsu-cho
41.Nagasawa Clinic	2-1-107 Funado-chho
42.Nakanishi Clinic	3-23-3F Funado-cho
43.Narabayashi Internal Medicine & Respiratory Medicine Clinic	1-29-5F Funado-cho
44. Nishikawa Internal Medicine Clinic	4-1-401 Funado-cho
45.Nishiwaki Gastroenterology & Surgery Clinic	9-9 Hama-cho
46.Nomura Clinic	5-10 Ise-cho
47.Hirabayashi Clinic	9-5-101 Hama-cho
48.Fuji Clinic	6-13-1F Seido-cho
49.Fujisaki Orthopedics Clinic	2-1-206 Funado-cho
50.Furukawa Ear, Nose, Throat Clinic	5-1 Ohara-cho
51. Honda Surgery & Gastroenterology Clinic	5-11 Miyagawa-cho
52.Maekawa Clinic	4-5 Nishikura-cho
53.Minami-Ashiyahama Hospital	3-21 Yoko-cho
54.Miyazaki Internal Medicine Clinic	7-3-201 Kasuga-cho
55.Maple Kodomo Clinic	1-7 Iwazono-cho
56.Yoshida Internal Medicine Clinic	5-2-6F Narihira-cho
57.Watanabe Internal Medicine Clinic	7-2-105 Takahama-cho

## Doctors on Call for Emergencies on Sundays and Holidays



●Evening Medical Care Rotation *8:00 p.m.–11:00 p.m. on Friday		
June 4	Nishiwaki Gastroenterology & Surgery Clinic (Internal Medicine/Surgery/Gastroenterology/Proctology)	☎ 0797-38-9891
June 11	Ueda Internal Medicine Clinic (Internal Medicine)	☎ 0797-34-1878
June 18	Matsuba Clinic (Internal Medicine)	☎ 0797-22-1641
June 25	Ashiya St. Maria Hospital (Surgery/Internal Medicine/Orthopedics)	☎ 0797-23-1771

- Be sure to wear a face mask when you visit the doctor or a hospital.
- First make a call when you have a fever.

### ■Designated Emergency Hospital

- Ashiya Municipal Hospital (Surgery/Internal Medicine) ☎ 0797-31-2156  
 Minami-Ashiyahama Hospital (Surgery/Internal Medicine) ☎ 0797-22-4040  
 Ashiya St. Maria Hospital (Orthopedics/Surgery/Internal Medicine) ☎ 0797-23-1771

### ■Holiday Emergency Clinic (Internal Medicine/Pediatrics) ☎ 0797-21-2782

(5-13 Kimmitsu-cho, Ashiya City) (9:00 a.m.–5:00 p.m. on Sundays, public holidays, during the year-end and New Year's holidays)

### ■Amagasaki Health Medical Care Foundation Holiday/Night Emergency Medical Care

(Ear, Nose and Throat) ☎ 06-6436-8701

(3-15-20 Mizudo-cho, Amagasaki City)

(9:00 a.m.–4:00 p.m. on Sundays and public holidays / 6:00 p.m.–8:30 p.m. on Saturdays)

(9:00 a.m.–5:30 a.m. the next morning during the year-end and New Year's holidays)

### ■Amagasaki Health Medical Care Foundation Holiday/Night Emergency Medical Care

(Ophthalmology-Eye Department) ☎ 06-6436-8701

(3-15-20 Mizudo-cho, Amagasaki City)

(9:00 a.m.–4:00 p.m. on Sundays and public holidays)

(9:00 a.m.–5:30 a.m. the next morning during the year-end and New Year's holidays)

### ■Dental Center (14-9 Kurekawa-cho, Ashiya City) ☎ 0797-31-0658

(9:00 a.m.–11:30 a.m. on Sundays, public holidays, during the year-end/New Year's holidays)

### ■Kobe Children's Primary Emergency Medical Center (Pediatrics) ☎078-891-3999

(1-4-1, Wakinohama Kaigan-dori, Chuo-ku, Kobe City) (Located in "HAT KOBE")

Consultation Days	Reception Hours
Monday-Friday	7:30 p.m.–6:30 a.m. the next morning
Saturday	2:30 p.m.–6:30 a.m. the next morning
Sunday & Public holiday The year-end/New Year's holidays	8:30 a.m.–6:30 a.m. the next morning



## Welfare Medical Expenses Subsidy System



◇ **Inquiries:** Welfare and Medical Services Subsection,  
Community Welfare Section

Phone: 0797-38-2076

Please refer to the chart below for conditions of eligibility as of July 1, 2021. Those eligible should submit an application. Those who have applied do not need to submit another application.

Medical Category	Age Group, etc.	Standard Income Threshold (FY2020 Income)
Subsidy for the Pre-Elderly	<p>Individuals between the ages of 65 and 70, starting and ending on their month of birth respectively. For those born on the 1st of a month, the previous month applies).</p> <p>※ Some conditions of eligibility differ for individuals born on or before June 30, 1952. Please inquire with the Welfare &amp; Medical Services Subsection.</p>	<p>Individuals in a municipal tax-exempt household who satisfy one of the conditions below:</p> <p>◇ All members of the household do not have any income or have a pension income of 800,000 yen or less.</p> <p>◇ The recipient is certified as Long-Term Care Required Level 2 or higher and has a total income of 800,000 yen or less with their pension and any other income combined.</p>
Medical Expenses Subsidy for Infants, etc.	<p>0-year-olds</p> <p>Children between the ages of one and the end of 3rd grade of elementary school</p>	No income limits
Medical Expenses Subsidy for Children	Children between 4th grade of elementary school and the end of junior high school (the first March 31 after their 15th birthday).	<p>The municipal (ward) resident tax per income levy is below 235,000 yen for each parent/guardian, etc.</p> 
Medical Expenses Subsidy for Single-Parent Households	<p>◇ Fathers and mothers, and their children in single-parent households, etc.</p> <p>◇ Children bereaved by the death of their parents, etc.</p> <p>◇ Single caregivers who support children without any parents</p> <p>※ All of the above applies up until the first March 31 after the child's 18th birthday.</p>	<p>Income below 1,920,000 yen for mothers or other supporters under duty without any dependents, or income below the total amount of 380,000 yen added for each dependant to the 1,920,000 yen.</p>
Medical Expenses Subsidy for the Disabled	Individuals with a Physical Disability Certificate (Grades 1, 2, or 3), Intellectual Disability Certificate (A or B1), or Mental Disability Certificate (Grades 1 or 2)	<p>Municipal (ward) resident tax per income levy is below 235,000 yen for each recipient, spouse, and supporter under duty.</p> 
Medical Expenses Subsidy for the Disabled Elderly	Insured persons under the Medical Care System for the Latter-Stage Elderly [ages 75 and over] with a Physical Disability Certificate (Grades 1, 2 or 3), Intellectual Disability Certificate (A or B1), or Mental Disability Certificate (Grades 1 or 2)	

### ◇ Renewal of Welfare Medical Expenses Recipient Certificates

The current Welfare Medical Expenses Recipient Certificates (福祉医療費受給者証 *fukushi iryo-hi jyukyu-sha-sho*) will expire on June 30, 2021. New certificates will be sent out to eligible persons at the end of June. If you should visit a medical institution before your certificate arrives, be sure to keep the receipt as you may be able to apply for a refund.

### ◇ Submit Current Status Reports

Recipients of Medical Expenses Subsidy for Single-Parent Households (母子家庭等医療費助成制度 *boshi-katei-to iryo-hi jyosei seido*) should submit a Current Status Report (現況届 *genkyo todoke*). The subsidy will not be granted unless a report is submitted.

### ◇ Subsidy of Medical Expenses for Home-Nursing

All or part of out-of-pocket medical expenses for home-nursing (within medical insurance coverage) incurred on or after July 1, 2021, may be subsidized. Other public medical expenses subsidy programs, such as for medical services and support for persons with disabilities<sup>1</sup> and patients with designated debilitating/rare diseases<sup>2</sup> will apply first. <sup>1</sup> 自立支援医療 *jiritsu shien iryo*, <sup>2</sup> 指定難病 *shitei nanbyo*



### ◇ Appropriate use of Medical Institutions and Pharmacies

Except in cases of emergency, please avoid seeking medical care after hours, at night, and on holidays.

### ◇ Inquiries: Welfare and Medical Services Subsection, Community Welfare Section

Phone: 0797-38-2076

## Health Center Announcements



### ■ 40 & 50 Year Old Dental Check-up Coupons

Dental check-up coupons will be mailed to those who are either 40 or 50 years of age as of April 1, 2021. Take advantage of a free check-up to maintain oral health.

◇ Location: A dental clinic (appointment required)

### ■ Cancer Screening and Hepatitis Virus Test Coupons

Free cancer screening and hepatitis virus test coupons will be mailed to those eligible.

◇ Eligibility: Citizens aged below as of April 1, 2021.

- Cervical Cancer Screening ..... 20-year old females
- Breast Cancer Screening ..... 40-year-old females
- Large Intestine Cancer Screening ..... 40-year-olds (male and female)
- Hepatitis Virus Test (for those never been tested) ... 40-year-olds (male and female)

◇ Inquiries: Health Center

Phone: 0797-31-1666



**ASHIYA TRIANGLE, Ashiya Public Relations TV Program (CH11/15 min.)**

Broadcast Time: ①9:00 a.m. ②12:00 noon ③3:00 p.m. ④6:00 p.m. ⑤10:00 p.m.



## **Child Allowance & Special Benefits**

When a child is born, or when you move in or move out of Ashiya City, please submit a notification to City Hall in person or by mail.

Public servants should submit one to their employer.

◇ **Qualified Recipients:** Those who are raising a child who is yet to finish junior high school (up until the first March 31 following the child's 15th birthday).

※ If you wish to change the qualified recipient due to a divorce proceeding, etc., please consult the Childrearing Promotion Section.

◇ **Monthly Allowances** (for those with income below the published thresholds):

Age Group		Child Allowance
Under 3 years of age		15,000 yen
3-year-olds up to elementary school-aged children	1st and 2nd child	10,000 yen
	3rd and any subsequent child*	15,000 yen
Junior high school-aged children		10,000 yen

\* 3rd and any subsequent child among children yet to finish high school.

※ **Special Benefits** (特例給付 *tokurei kyufu*) for those with an income above the published threshold are 5,000 yen per month per child.

◇ **Child Allowance Income Thresholds:**

Based on 2020 income

Number of Dependents, etc.	Income Threshold
none	6,220,000 yen
1 person	6,600,000 yen
2 persons	6,980,000 yen
3 persons	7,360,000 yen
4 persons	7,740,000 yen
5 persons	8,120,000 yen

◇ **Payment Dates:**

June 15 (for Feb.–May), Oct. 15 (for June–Sept.), and Feb. 15 (for Oct.–Jan.).

※ Deposits will be made to the account on record.

◇ **Current Child Allowance Recipients:**

Current Status Reports (現況届 *genkyo todoke*) will be mailed at the beginning of June. Fill out and return the report by Wed., June 30 as allowances will not be paid from the month of June if you fail to do so.

◇ **Inquiries:** Childrearing Promotion Section

Phone: 0797-38-2117

## **Ashiya Suiren Gakkou (Swimming School) Available for Students**

◇ **Period:** July 26–August 25 (22 days)

◇ **Time:** 8:30–11:00 a.m.

\* Closed on Sat., Sun., public holidays, rainy days, and when a weather warning is issued.

◇ **Location:** Asahigaoka Park Swimming Pool

◇ **Fee:** 20,000 yen

◇ **Eligibility and Capacity:** The first 450 elementary, junior high, and high school students.

◇ **How to Apply:** Online application from the homepage written below between July 19 and July 1.

◇ **Application and Inquiries:** Ashiya Suiren Gakkou (Swimming School)

(<https://ashiya-suiren.com>)



## Ashiya School Lunch Recipes

### ■ Italian Sauce Pasta

#### □ Ingredients (Serves 4):



160 g spaghetti  
 ➤ **Italian Sauce**  
 150 g tomatoes  
 100 g onions  
 3 g garlic  
 3 g basil leaves  
 2 Tbsp olive oil  
 1 Tbsp lemon juice

➤ **Seasoning**  
 2 Tbsp white wine  
 1 Tbsp vinegar  
 1.5 tsp sugar  
 0.5 tsp salt  
 pepper to taste

#### □ Directions:

1. Boil and drain spaghetti. Set it aside to cool.
2. Blanch and peel tomatoes. Cut tomatoes into 1 cm cubes. Mince garlic. Finely chop onions and basil leaves.
3. Make the sauce: Heat olive oil and garlic in a skillet until fragrant. Add onions and stir fry. Add tomatoes and cook.
4. Add Seasonings and heat to boiling point and remove from heat. Add basil and lemon juice. Set aside to cool.
5. Stir the spaghetti and sauce together, and serve.



## Rainwater Storage Installation Subsidy

- ◇ **Eligible Storage Units:** Rainwater storage tanks with a capacity of 100 liters or more that are marketed for watering purposes and meet Ashiya City standards.
- ◇ **Eligible Persons:** Ashiya City landowners and house owners, and individuals permitted by an owner to install and use such equipment. Other conditions may apply.
- ◇ **Subsidy:** Half of the total cost of the equipment and installation combined up to 30,000 yen per unit.
- ◇ **Application:** Submit required documents by Fri., December 24, 2021 to the Sewerage Section. Documents may be downloaded from the Ashiya City website.
- ◇ **Inquiries:** Sewerage Section



Phone: 0797-38-2067

## Landslide Safety & Preparedness

Typhoons and torrential rains are prone to occur during the months of June through October. Various locations throughout Japan have been hit by major landslide disasters. Take necessary precautions and make adequate preparations in your daily lives.

- ◇ **Inquiries:** Disaster Prevention and Security Section
- Phone: 0797-38-2093



### **Water Leak and Water Supply Pipe Repairs**

- Weekdays during the daytime ➤ **Waterworks Customer Service Center**
- Saturdays, Sundays, public holidays, and during the night ➤ **City Hall**

☎ 0797-38-2082

☎ 0797-31-2121

-National Pension Insurance Premiums-  
**Application for Exemption / Postponement of Payment**

This system serves those who are experiencing difficulty paying National Pension Insurance Premium due to unemployment or income reduction, etc.

**<Exemption>**

There are four kinds of exemption: “Total exemption”, “Three-quarters exemption”, “Half exemption” and “One-quarter exemption”. The exemption period is added to the recipient qualification period, and will be partially reflected in the future pension amount according to the kinds of exemption.

Premiums:

Kinds of Exemption	Insurance premiums
Total exemption	0 yen
Three-quarters exemption	4,150 yen
Half exemption	8,310 yen
One-quarter exemption	12,460 yen

**<Payment Postponement>**

Even though the postponed period is added to the recipient qualification period, it will not be reflected in the future pension amount .

- **Eligibility:** Anyone whose previous year’s income and that of his/her spouse and head of household did not exceed the base amount.
- **How to Apply:**  
Come to the Management Subsection (Pension Desk), Citizens’ Section with your Identification documents (My Number Card, for example) and a separation notice, etc. in case of unemployment.

**<Additional Payment of Insurance Premiums>**

You can make additional payment of the insurance premiums for the exempted or postponed period within 10 years. Additional payments will be reflected in the future pension amount.



- **Inquiries:** Pension Desk, Management Subsection, Citizens’ Section  
(Phone: 0797-38-2036)

**Exemption from Individual Municipal/Prefectural Residential Tax**

Exemption from individual municipal/prefectural residential tax is possible

- **Eligibility:** Those who meet certain requirements, such as loss of employment, reduction in income to half of the previous year’s income, etc.
- **How to Apply:** Make application to Municipal Tax Subsection, Taxation Section by the time for payment.  
\* Tax already paid and overdue tax payments are ineligible.
- **Inquiries:** Municipal Tax Subsection, Taxation Section (Phone: 0797-38-2016)





## **Welfare Benefits for Elderly Foreign Citizens without Pension**



- **Deadline of Application for the Welfare Benefits: June 10<sup>th</sup>**
- **Eligibility:** A resident of Ashiya City who was born on or before April 1, 1926 and who meets any of the following requirements:
  - (1) Anyone who had registered his/her place of residence within Japan as of January 1, 1982 under the Alien Registration Law.
  - (2) Anyone who registered his/her place of residence on or before January 1, 1982 under the Alien Registration Law, and obtained Japanese nationality on or after April 1, 1961, and cannot fulfill the residency requirement for institutional pension eligibility.
  - (3) A Japanese national who lived abroad for a long time, and returned on or after April 1, 1961, but cannot fulfill the residency requirement for institutional pension eligibility.
- N.B. The following persons, even though they meet any of the above requirements, are not eligible:
  - Recipients of public pension, etc. (712,000 yen or more per year)
  - Recipients of Ashiya City special benefits for the handicapped with a high degree of disability
  - Recipients of Livelihood Subsidies
  - Those whose total individual income, and his/her spouse, and any supporters exceeds the limitation amounts.
- **Monthly Allowance: 33,341 yen**
- **Inquiries: Management Subsection, Citizens' Section**  
(Phone: 0797- 38-2030)

- We Will Support Your Learning -

### **Accepting Application for Ashiya City Scholarship**

- ☐ **Eligibility:** Those who are experiencing difficulties attending school because of financial reasons and meet all of the following criteria
  - ◆ Being enrolled in high school; the latter half course of secondary educational School; a technical college (grades 1-3); a special needs school (upper division); or the upper division of an equivalent school
  - ◆ The person who maintains applicant's livelihood lives in Ashiya city (registered as a resident, in principle).
  - ◆ The annual income of the person who maintains applicant's livelihood is below base amount, unemployed or is expected to become below base amount because of sudden change in household budget.
- \* If the applicant is a recipient of Hyogo Prefecture Scholarship Benefits, he may not be able to receive it at the same time
- ☐ **How to Apply:** Submit the required documents, which are distributed at each school or Board of Education from June 1, to the Management Section by Thu., July 15<sup>th</sup>.
- ☐ **Inquiries:** Management Section, Board of Education (Phone: 0797-38-2085)



## Ashiya' s History and Cultural Assets Exhibition

We will introduce historical materials according to periodization of history; ancient, medieval, early-modern, and modern periods. There will also be an exhibition on the Egenoyama Archaeological Site which marks the 10<sup>th</sup> anniversary of its designation as a national historic site.



- ◇ Term: ~ November 21 10:00 a.m. – 5:00 p.m. Admission until 4:30 p.m.

Closed on Mondays (On the following day when Monday is a national holiday)

- ◇ Place: Ashiya City Museum of Art and History, 1F Exhibition Room
- ◇ Admission Fee: Adult – 700 yen College and high school student – 500 yen

The elderly, 65 years of age and older, physical disability certificate, medical care certificate holders – Half price

Inquiries: Ashiya City Museum of Art and History (Phone: 0797-38-5432)

## Evacuation Drill – June 17 (Thurs.) 10:00 a.m.

- ◇ Place: Throughout the city
- ◇ Date and Time: Thurs., June 17 10:00 a.m.
- ◇ Contents: Disaster Prevention Administrative

Radio will be on air over loudspeakers, then emergency and evacuation information will

be distributed to subscribers. Your understanding and participation in the “Shake out” drill are appreciated to protect yourself during earthquakes.

If you could not hear Disaster Prevention Administrative Radio,

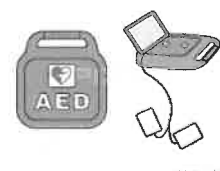
Auto-response Telephone: 0180-99-7787 service is available.

- ◇ Inquiries: Disaster Prevention and Security Section (Phone: 0797-38-2093)



## Monthly First-Aid Training Class

- ◇ Date and Time: Sun., 27 June 9:30 a.m. – 12:30 p.m.
- ◇ Place: Fire Department Headquarters
- ◇ Contents: AED cardiopulmonary resuscitation and other emergency aids
- ◇ Capacity: 20 people
- ◇ Eligibility: Those who live, work, and study in Ashiya, junior high school student or over
  - ※ Certificates will be given to participants.
- ◇ Application: Contact us at the number below by 5:30 p.m. on June 25.



Inquiries: Emergency Section, Fire Department Headquarters (Phone: 0797-32-2345)

## Get a Rabies Shot Every Year

Try to get a rabies shot at your local veterinary clinic if possible.

### Dates and Locations of Rabies Shots (Group vaccination)

Day	Location	Time
Fri., June 18 <sup>th</sup>	Chuo Park (1 Wakaba-cho)	1:30-2:00 p.m.
	In front of Iwazono Child Daycare Center (2-18 Iwazono-cho)	2:30-3:00 p.m.
Sat., June 19 <sup>th</sup>	Okuike Assemble Hall (34-4 Okuike-cho)	1:30-1:50 p.m.
	In front of the entrance to City Hall South Wing (7-6 Seido-cho)	2:20-3:00 p.m.



Please bring with you “Rabies Vaccination Information”

(「令和3年度狂犬病予防注射のご案内」) which was sent to you in April.

- Cost: 3,400 yen /dog
- Inquiries: Environmental Section (Phone: 0797-38-2050)

## Sign Language Class

- ◆ Date and Time: Fri., June 25<sup>th</sup> 1:30-3:00 p.m.
- ◆ Location: Ashiya Welfare Center
- ◆ Content: Sign language class for beginners
- ◆ Eligibility and Capacity: 20 people, living or working in Ashiya city
- ◆ Application and Inquiries: Ashiya City Social Welfare Council (Phone: 0797-32-7525)



## Windows 10 PC Classes

- Date: Wed., July 7<sup>th</sup> and 14<sup>th</sup>
- Time and Course:
  - (1) 10:00 a.m.-Noon “Zoom experience; let’s enjoy with distant relatives and friends”
  - (2) 1:00-3:00 p.m. “Course for women to make good use of Word” (2 classes)
- Eligibility, Capacity and Cost:
  - (1) 6 people for each day 500 yen
  - (2) 6 female beginners who live in Ashiya, can type and attend both days 1,000 yen
- What to bring: Writing materials, an attendee’s ticket and fee
- How to Apply: Send a fax or a postcard with your name and address, age, phone number, class name and day you want to take by Mon., June 21<sup>st</sup>. We will let you know the result by a postcard.
- Mailing address and Inquiries:



Kamimiyagawa Cultural Center, 10-5 Kamimiyagawa-cho 659-0061

(Phone: 0797-22-9229 / Fax: 0797-22-1659)





## Enjoy Talking Together in Spanish !

Why not enjoy talking with foreigners who live in Ashiya and speak Spanish ?

- ◆ Date and Time: Mon., July 12<sup>th</sup> 3:00–5:00 p.m.
- ◆ Venue: Large Conference Room, 2F Branch City Hall
- ◆ Capacity: 20 people ◆ What to Bring: A drink
- ◆ How to Apply: Send an e-mail by June 9<sup>th</sup>
- ◆ Application and Inquiries:

Public Relations and International Exchange Section

(Phone: 0797-38-2008 / E-mail: [kokusai@city.ashiya.jg.jp](mailto:kokusai@city.ashiya.jg.jp))

## Events at Tanizaki Junichiro Memorial Museum of Literature

[Lobby Exhibition]

### **KATSURAKI Tomoko Exhibition**

Enjoy the “Expression” of Malen Glasritzen, a glass decoration art that was admired in medieval Europe.

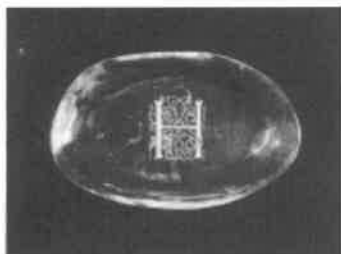
☐ Exhibition Period: June 12<sup>th</sup> – July 17<sup>th</sup>



Shangri-La

[Related Event] One day Trial Course: “Initial Plate”

Drawing a design on the surface of a glass using a needle with diamond particles



Initial Plate

- ☐ Date and Time: Sun., June 20<sup>th</sup> 2:30–4:30 p.m.  
Tue., July 6<sup>th</sup> 1:30–3:30 p.m.
- ☐ Place: Lecture Room
- ☐ Capacity: 6 people for each day
- ☐ Instructor: Ms. Tomoko KATSURAKI
- ☐ Cost: 4,500 yen (including materials)
- ☐ What to Bring: Cellophane tape / Scissors / Nail polish remover / Extra fine sign pen / Pocket tissue

[The 35<sup>th</sup> *Zangetsusai* (残月祭)] (An annual event commemorating the birth of Tanizaki)

### Lecture by FUSHINO Michiru : “Tanizaki’s Life, Our Life”

Ms. Michiru FUSHINO, a doctor and novelist will talk with a focus on the life of Tanizaki portrayed in his works and essays.



Ms. Michiru FUSHINO

- ☐ Date/Time/Location: Sat., July 24<sup>th</sup> 2:00–3:30 p.m. Luna Hall
- ☐ Lecturer / Capacity: Ms. Michiru FUSHINO / 300 people
- ☐ Ticket Fee: 1,800 yen (Advance: 1,500 yen)

[Points of Ticket sale]: Tanizaki Junichiro Memorial Museum, O-toshi

Shobundo, Shop in the City Hall and Kitchen Café Narihira

[Call, Fax or E-mail]: Give your name/address, phone number and number of participants; we will inform you of transfer method, and send you the advance tickets after confirming payment.

☐ Application and Inquiries for the events above:

Tanizaki Junichiro Memorial Museum of Literature

(Phone: 0797-23-5852 / Fax: 0797-38-3244) (E-mail: [ashiya-tanizakikan@shopro.co.jp](mailto:ashiya-tanizakikan@shopro.co.jp))

## VR (Virtual Reality) Experience of Modernism Architecture in Ashiya



The following three buildings that represent Ashiya Modernism are now on view in VR.

YODOKO Guest House (The Former Residence of the Yamamuras)

Ashiya Monolith (Telephone Office of the Former Ashiya Post Office)

Former Miyazuka-cho Housing Complex

From your smartphone, you can experience a sense of reality as if you are actually seeing them.

□ Inquiries: Lifelong Learning Section

(Phone: 0797-38-2115)



## KOMINKAN Concert: Music in the Age of Takehisa Yumeji Singing Senow Gakufu (Senow Musical Score)

Senow Gakufu, published in the Taisho and early Showa eras, was very popular and dominated the music world with its beautiful Cover Art and Binding by Takehisa Yumeji, among others. Please enjoy the masterpieces of song and piano from Senow Gakufu.

[Program] Yoimachigusa (宵待ち草)/Hamabe no Uta (浜辺の歌)/Ko-jo no Tsuki (荒城の月) / Vocal duet from Merry Widow, etc.

- Date and Time: Sat., Aug. 7<sup>th</sup> 3:00 p.m.
- Venue: Luna Hall (The Hall opens at 2:30 p.m.)
- Capacity/Cost : 300 people /500 yen
- How to Apply: Send a Postcard or fax with concert name, your name /address, phone number, number of participants (up to 5) and age of children participants to *Kominkan* (Community Learning Center) no later than July 24<sup>th</sup> (without fail).

- Inquiries: Community Learning Center (*Kominkan*)  
(Phone: 0797-35-0700 / Fax: 0797-35-4998)



Tsutomu Tokimune  
(Baritone)



Kanae Fujita  
(Soprano)



Tomoki Jiro-maru  
(Piano)

A Lecture related to:  
**Special Exhibition "INOH Tadataka"**  
Commemorating the 200<sup>th</sup> Anniversary of "INOH Zu" Presentation

\* INOH Zu :  
Maps of Japanese  
Coast measured by  
INOH Tadataka

This lecture will help you better appreciate the Special Exhibition "INOH TADATAKA" to commemorate the 200<sup>th</sup> Anniversary of "INOH Zu" Presentation, which will be held at Kobe City Museum from July 10<sup>th</sup>

- Date, Time and Place: Thu., July 29<sup>th</sup> 2:00 p.m.- Luna Hall (Opens at 1:30 p.m.)
- Lecturer: Misaki Nagayama
- How to Apply: Send a self-addressed post card with seminar title 「伊能忠敬展関連講演会」, your postal code, name/address, phone number and the number of participants (up to 2) on the original message card, and your postal code, name and address on the front side of the reply card (with the back side blank) to the address indicated below by July 15<sup>th</sup>.

- Application/Inquiries: Community Learning Center (*Kominkan*)  
(Phone: 0797-35-0700)

## Reading Time for Adults with Temporary Child-care

*How about reading leisurely for yourself? We'll take care of your child in our nursing room.*

*You can read any books you bring in or any books for lent in the book corner.*



- ☐ Date and Time: Mon., June 21<sup>st</sup> / Tue., June 22<sup>nd</sup> 10:00–11:30 a.m.
- ☐ Location: Ashiya City Gender–Equality Center
- ☐ Eligibility: Parents (including grandparents) with pre-school children over 6 months
- ☐ Cost for day-care: 300 yen per child / Up to 3 children
- ☐ How to apply: Visit, call or E-mail by Mon., June 7<sup>th</sup>.

\* Lottery will be held if the number of applicants exceeds the quota.

- ☐ Application and Inquiries: Gender–Equality Center  
(Phone: 0797–38–2023) <E-mail: [josei-ce@city.ashiya.lg.jp](mailto:josei-ce@city.ashiya.lg.jp)>



## Gardening Classes at Ashiya Grand Park (Sogo Koen)

Content (Class name)	Date /Time	Cost	Application Deadline
(1) “Let’s try to make cuttings”	Tue., June 8 <sup>th</sup> 10:30 a.m.–Noon	500 yen	Sun., June 6 <sup>th</sup>
(2) “How to grow roses”	Tue., June 8 <sup>th</sup> 1:30–3:00 p.m.	Free	Mon., June 7 <sup>th</sup>
(3) “Let’s grow vegetables; easy and enjoyable !”	Thu., June 10 <sup>th</sup> 10:30 a.m.–Noon.	500 yen	Tue., June 8 <sup>th</sup>
(4) “Make an arrangement with sun flowers”	Thu, June 17 <sup>th</sup> 10:30 a.m.–Noon	1,500 yen	Thu., June 10 <sup>th</sup>
(5) “Create an assorted cactus planting with summer image”	Sun., June 20 <sup>th</sup> 10:30 a.m.–Noon.	2,000 yen	Sun., June 13 <sup>th</sup>
(6) “Create a charming pot of assorted color leaves”	Mon., June 21 <sup>st</sup> 1:30–3:00 p.m.	2,500 yen	Mon., June 14 <sup>th</sup>
(7) “Hydro-culturing of Spathiphyllum”	Sat., June 26 <sup>th</sup> 10:30 a.m.–Noon	1,500 yen	Sat., June 19 <sup>th</sup>

- \* Capacity: 15 persons for each class
- \* What you should bring: Writing materials and a bag to take the work home
- \* How to Apply: Visit, call/fax or E-mail to Ashiya Grand Park by each deadline.
- \* Location and Inquiries: Ashiya Grand Park (Sogo Koen)  
(Phone: 0797–38–2103 / Fax: 25–2026 / E-mail: [ashiyasogo@mizuno.co.jp](mailto:ashiyasogo@mizuno.co.jp))



## Sun. June 6<sup>th</sup> : My Number Card Issuing Counter Opens

- Time/Place: 9:00 a.m.–1:00 p.m. Counter No.6 1F City Hall North Wing
- Content: Receipt of My Number Card / Renewal of digital ID documents
- Inquiries: Citizens’ Section (Phone: 0797–38–2070)



## **Free Tennis Day for Ashiya Citizens at Ashiya Park Tennis Courts**

- ☐ Date and Time: Wed., July 7 / 9:00 a.m.–1:00 p.m.. (Cancelled in case of rain)
- ☐ Place: Ashiya Park Tennis Courts      ☐ Capacity: 60 people
- ☐ Things to bring: Tennis wear, tennis shoes, racket, tennis ball
- ☐ Application: Fill out the designated application form, which can be obtained at the following office or from the city's website, and fax or submit it to the office between June 1 and June 22.
- ☐ Inquiries: Ashiya Park Tennis Courts (Phone: 0797-34-8886/Fax: 0797-34-8884)



## **The 79<sup>th</sup> Citizen's Yose: Rakugo by Katsura Yonedanji**

- ☐ Date and Time: Mon., August 9 3:00 p.m.– (Doors open at 2:30 p.m.)
- ☐ Venue: Luna Hall
- ☐ Program: "Momotaro" "Senryo Mikan" "Jigokubakkei Moja-no-Tawamure"
- ☐ Performers: Yonedanji Katsura, Danjiro Katsura, Kojaku Katsura
- ☐ Fee: 3,000 yen (at the door) /2,500 yen (advance ticket) (All reserved seating)
- ☐ When to apply: From 9:00 a.m. on Mon., June 7
- ☐ Tickets are available at: Ashiya Citizens' Center Office, City Hall Shop, Lawson Ticket (L code 51549)
- ☐ Inquiries: Luna Hall Project Desk (Phone: 0797-35-0700)



## **Human Rights Theater "The Prisoner of Sakura (*Sorokin no mita sakura*)"**

- ◆ Date & Time: Sat., June 26 (1) 10:00 a.m.– (2) 1:30 p.m.– (111 min.)
- ◆ Venue: Kamimiyagawa Cultural Center      ◆ Capacity: 60 people each showing
- ◆ Content: A joint Japan–Russia co-production, the movie is based on the true story of a Russian officer and a Japanese nurse. It is a kind of "Romeo and Juliet" story of the Russo–Japanese War.
- ◆ Things to bring: Indoor shoes, a bag for shoes
- ◆ Application: Apply to the following center by phone from 9:30 a.m. on June 23.
- ◆ Inquiries: Kamimiyagawa Cultural Center (Phone: 0797-22-9229)



## **Beware of Scams & Frauds Related to COVID-19 Vaccination**

It has been confirmed that, in Ashiya City, there have been suspicious phone calls or emails asking for personal information or payment in exchange for prioritized vaccination. Under no circumstances will any staff of Ashiya City ask payment or personal information from you by phone or email.

## Recruiting Users of Ashiya City Communal Burial Cemetery



- **Distribution of recruitment guide:** From Mon., June 21<sup>st</sup> at the following places  
Cemetery Office / City Hall reception / Environmental Section /  
Assembly Halls / Laporte Citizens' Service Corner
- **Cinerary Method**
  - “Direct communal burial style”: The burnt bones are laid to rest in the Communal burial room without using One-time placement room
  - “Communal burial after placement style”: The burnt bones are laid in the One-time placement room for 10 years, then are laid to rest in the Communal burial room.
- **Eligibility and Content** (Permitted cinerary method is shown with the sign of ○ or ×)  
    <Non-user of Ashiya City Cemetery>  
        [Ashiya Citizen] who corresponds to any of the following criteria
  - ◆ Keeping burnt bones of family or relative at home  
            Direct communal burial style ○ / Communal burial after placement style ○
  - ◆ Thinking of burial site change for the burnt bones of family or relative from the grave or a charnel house other than Ashiya city Cemetery to Ashiya city Communal burial Cemetery.  
            Direct communal burial style ○ / Communal burial after placement style ×
  - ◆ Going to make reservation before death for one's own afterlife, and being 65 years old and over as of application date.  
            Direct communal burial style ○ / Communal burial after placement style ×  
        [Non-Ashiya citizen]
  - ◆ Keeping at home the burnt bones of family or relative who died as an Ashiya citizen.  
            Direct communal burial style ○ / Communal burial after placement style ○
- <Users of Ashiya City Cemetery>  
        Those who have been permitted to use Ashiya City Cemetery are required to carry out the following:
  - ◆ To return and close the individual grave in Ashiya City Cemetery
  - ◆ To change burial site or to make reservation before death for his own after life at the Communal Burial Cemetery  
            Direct communal burial style ○ / Communal burial after placement style ×
- **Cost according to the cinerary method**
  - Direct communal burial style: 100,000 yen per body
  - Communal burial after placement style: 200,000 yen per body
  - Use of Nameplate: 30,000 yen per plate (Optional)
- **How to Apply:** Fill in the application form and mail it to Cemetery Office. We cannot accept at the counter of the Office.
- **Mailing Address:** Ashiya Cemetery Office,  
15-7 Asahigaoka-cho, 659-0012
- **Inquiries:** Environment Section (Phone: 0797-38-3105)





## Results of FY 2020 Environmental Survey concerning Air Pollution

### <Air Quality>

Air pollution static monitoring stations are installed at 5 points in the city. Most of the categories of pollutants—Sulfur dioxide, Nitrogen dioxide, Suspended particulate matter, Carbon dioxide— with the exclusion of Photochemical Oxidants—have met the environmental standard. The photochemical smog warning caused by Photochemical Oxidant was issued just once.

### <Noise and Vibration Measurement >

A survey on noise and vibration was conducted at 6 observation points at 3 main streets. The noise level at 3 points met the environmental standard, while the measurements at all the points were lower than the requested limit value. The vibration level was lower than the requested limit value at all points. Detailed results are available at Ashiya City Official Website.

Inquiries: Environment Section (Phone: 0797-38-2051)

### *Instagram* of THIS MONTH



sora\_cocchan さん



smirnoff\_さん

We are accepting your favorite spots in Ashiya. Please submit at #ahiyagram2021  
The photos will be published in this feature of the *Koho Ashiya*.

- ◇ The acceptance will be noticed directly from the account @ashiyacity\_official
- ◇ Photos must be taken by the applicant him/herself and must be admitted by the subject (in case of person)

#### PUBLISHED BY

**Ashiya Municipal Shio-Ashiya Exchange Center**  
(Designated administrator: **Ashiya Cosmopolitan Association**)

7-1 Kaiyo-cho Ashiya  
Phone: 0797-25-0511      Fax: 0797-25-0512